

Report on Baseline Study for Corporate Social Responsibility for FY 2013 – 14

Submitted to: Garden Reach Shipbuilders and Engineers' Limited (GRSE), Kolkata

Location

Maheshtala Municipality Wards 1 to 10

Kolkata Municipal Corporation Wards 76 – 80



National Corporate Social Responsibility (CSR) Hub

Tata Institute of Social Sciences

Mumbai

August 2013

Acknowledgement

We would like to express our gratitude to GRSE for supporting us throughout the course of this study.

We would also like to thank the Research Investigators for helping us in data collection for the study.

Prof. B. Venkatesh Kumar
Director, National CSR Hub,
Tata Institute of Social Sciences, Mumbai

Table of Contents

Acknowledgement.....	2
List of Tables & Figures.....	5
Research Team.....	6
Abbreviations.....	7
Chapter 1: Need for Baseline Study.....	8
1.1 Fulfillment of DPE Guidelines.....	8
1.1.1 Guidelines on CSR for CPSEs.....	8
1.1.2 Revised DPE Guidelines on CSR.....	8
1.2 Need for Baseline Study.....	10
1.3 New Companies Bill 2012.....	10
1.4 Collaboration with the NCSR Hub.....	10
1.5 Garden Reach Shipbuilders' and Engineers Ltd.....	11
1.6 Mission and Vision for CSR.....	12
Chapter 2: Brief Profile of Study Areas: Secondary Data Research.....	13
2.1 Geographical Profile.....	13
2.1.1 KMC Wards 76 – 80.....	13
2.1.2 Maheshtala Municipality Wards 1 – 10.....	14
2.2 Educational Profile.....	16
2.3 Health Profile.....	16
Chapter 3: Research Methodology.....	18
3.1 Context of the Study.....	18
3.2 Objective of the Study.....	18
3.3 Research Design.....	18
3.4 Study Tools.....	18
3.5 Sampling.....	18
3.6 Research Process.....	19
Chapter 4: Findings from the Field.....	20
4.1 Respondents Profile: KMC Wards 76 – 80.....	20
4.1.1 Socio-Economic Profile.....	20
4.1.2 Housing Pattern.....	21
4.1.3 Health.....	22
4.1.4 Education.....	23
4.1.5 Occupation.....	23
4.1.6 Sanitation.....	24
4.1.7 Drinking Water.....	25
4.1.8 Disability.....	26
4.2 MM Wards 1 – 10.....	26
4.2.1 Socio-Economic Profile.....	27
4.2.2 Housing Pattern.....	28
4.2.3 Health.....	29
4.2.4 Education.....	29
4.2.5 Occupation.....	30

4.2.6 Sanitation.....	31
4.2.7 Drinking Water.....	32
4.2.8 Disability.....	32
Chapter 5: Recommendations.....	33
5.1 Sanitation.....	33
5.1.1 Disposal of Solid Waste.....	33
5.1.2 Construction of Toilets.....	34
5.2 Education.....	34
5.3 Skill Development.....	35
5.4 Health.....	36
5.5. Drinking Water.....	36
5.6 Community Development.....	37
5.7 CSR for SC/ST Community.....	37
Annexure.....	38
Annexure I: Ward Wise School Information Table.....	38
A: Maheshtala Wards 1 to 10.....	38
B: KMC Wards 76 to 80.....	45
Annexure II: Registered Health Institutions as per Department of Health and Family Welfare, GoWB.....	58
Annexure III: Disability Data.....	60

List of Tables

Table 1: KMC Ward wise distribution of population and sex.....	13
Table 2: KMC Ward wise distribution of SC/ST population.....	14
Table 3: MM Ward wise distribution of population and sex.....	15
Table 4: List of Health facilities in KMC Borough IX.....	16
Table 5: KMC Ward wise Educational Status.....	23
Table 6: KMC ward Wise Occupational Status.....	23
Table 7: KMC Ward wise Sullage Conditions.....	24
Table 8: Disabled persons by the type of disability and sex in Kolkata District.....	26
Table 9: MM Ward wise Educational Status.....	29
Table 10: MM Ward wise Occupational Status.....	30
Table 11: MM Ward wise Toilet Type.....	31
Table 12: Disabled Persons by type of disability and by sex in South 24 Parganas (Urban).....	32

List of Figures

Figure 1: KMC Ward wise Religious Composition.....	20
Figure 2: KMC Ward wise Category Composition.....	21
Figure 3: KMC Ward Wise House Type.....	21
Figure 4: KMC Ward wise House Ownership.....	22
Figure 5: KMC Ward wise Health Seeking Behaviour.....	22
Figure 6: KMC Ward wise Toilet Type.....	24
Figure 7: KMC Ward wise Drinking Water Sources.....	25
Figure 8: MM Ward wise Religious Composition.....	27
Figure 9: MM Ward wise Category Composition.....	27
Figure 10: MM Ward wise House Type.....	28
Figure 11: MM Ward wise House Ownership.....	28
Figure 12: MM Ward wise Health Seeking Behaviour.....	29
Figure 13: MM Ward wise Sullage Conditions.....	31
Figure 14: MM Ward wise Drinking Water Sources.....	32

Research Team

Project Director

Prof. B. Venkatesh Kumar

Project Coordinator

Shreya Majumdar

Research Investigators

Soumendra Nath Biswas

Tonmoy Ghorai

Susanta Bhowmick

Shouvik Ghosh

Rana Das

Krishnendu Chatterjee

Kanishka Maitra

Biswajit Bhunia

Chinmoy Sarkar

Abbreviations

CSR	Corporate Social Responsibility
CPSEs	Central Public Sector Enterprises
GRSE	Garden Reach Shipbuilders & Engineers Limited
NCSR Hub	National Corporate Social Responsibility Hub
TISS	Tata Institute of Social Sciences
DPE	Department of Public Enterprises
PAT	Profit after Tax
RI	Research Investigator
KMC	Kolkata Municipal Corporation
MM	Maheshtala Municipality

Chapter 1

Need for Baseline Study

1.1 Fulfillment of DPE Guideline

1.1.1 Guidelines on CSR for CPSEs (9th April, 2010)

In order to move towards more responsible business by Central Public Sector Enterprises (CPSEs) under the new regime of Corporate Governance system with the help of Result Documentation Framework, Department of Public Enterprises (DPE), Ministry of Heavy Industries and Public Enterprises, Government of India, has circulated the “Guidelines on Corporate Social Responsibility for Central Public Sector Enterprises” vide F.No.15 (3)/2007 -DPE (GM) - GL-99, 9th April, 2010 for all CPSEs concern. According to this guideline, it is ensured that, CSR activities should not be limited to charity or done on donation basis, rather it should be visible and make social changes via creating sustainable resource base. The CSR activities should be based on short term, medium term and long term goals so that the impact of the programme can be visible clearly. To ensure consistency in the process of project implementation together with fulfillment of stated objectives, assessment is supposed to be a compulsory ingredient to ensure impact of the ongoing CSR projects.

1.1.2 Revised DPE Guidelines on CSR (31st December, 2012)

DPE has since revised its CSR guidelines which are effective from 1st April 2013. There is infusion of policy content in a large measure in the revised guidelines. The expectations of the key stakeholders, including the government, constitute the policy decision on CSR and Sustainability. Under the revised guidelines, major changes are highlighted below:

- ❖ CPSEs are expected to formulate their policies with a balanced emphasis on all aspects of CSR and Sustainability – equally with regards to their internal operations, activities and processes, as well as in their response to externalities. The earlier guidelines focused mainly on CSR activities for external stakeholders. As has been mentioned in clause 1.3.18, *“Central Public Sector Enterprises should formulate policies which meet the expectations of the stakeholders, within their organizational resource capability.”*
- ❖ The thrust of CSR and Sustainability is on capacity building, empowerment of communities, inclusive socio-economic growth, environment protection, promotion of green and energy efficient technologies, development of backward regions, and upliftment of the marginalized and under-privileged sections of the society. In the revised guidelines, CPSEs are to take up at least one major project mandatorily for development of a backward district. This will go a long way in the socio-economic development of the country. Clause 1.4.9 states *“Although CPSEs may select their CSR and Sustainability projects from a vast range of available options, priority should be accorded to activities pertaining to: i) inclusive growth of society, with special*

attention to the development of weaker sections of society and the backward districts of the country, and ii) environment sustainability. Hence, it will be mandatory for all CPSEs to select one project in each of the two categories of CSR and Sustainability activities mentioned above.”

- ❖ CPSEs are expected to act in a socially responsible manner at all times. Even in their normal business activities, CPSEs should try to conduct business in a manner that is beneficial to both, business and society.
- ❖ The two tier structure, comprising of Board level committee and a group of officials headed by a senior executive of not less than one rank below the Board level – which the CPSEs are mandated to create, is expected to have the authority and influence to be able to steer the CSR and sustainability agenda of the CPSE. Other key stakeholders like central/state governments, district administration, village level leaders should also be consulted while assessing needs of the intended beneficiaries. CPSEs should also conduct a study to realistically assess the requirements at the grass root level.
- ❖ CPSEs will have to disclose the reasons for not fully utilizing the budget allocated for CSR and Sustainability activities for a year.
- ❖ Emphasis is now placed on the scalability of CSR and Sustainability projects, in terms of their size and impact, rather than on their numbers.
- ❖ The revised guidelines allow the employees to avail the infrastructure facilities created by the Company from its CSR and Sustainability budget, provided the facilities are originally created essentially for the external stakeholders, and the use of these facilities by the CPSEs employees (internal stakeholders) is only incidental and confined to less than 25% of the total number of beneficiaries.
- ❖ For all CPSEs, having Profit after Tax (PAT) above 500 crores in the previous year, the range of budgetary allocation for CSR and Sustainability activities has been raised to 1%-2% from the earlier range of 0.5%-2%. Further, for CPSEs having PAT of 100 to 500 crores in the previous year, the minimum budget requirement of 3 crores for CSR has been removed.

For the purposes of MoU Evaluation, there are certain key performance indicators that the CPSEs will be assessed on. Clause 1.10.2 details these criteria as follows:

- i. The degree of involvement of the employees and the top management in internalizing the CSR and Sustainability agenda within the organization ;(GRSE CSR Team Structure)
- ii. The degree of success in implementing the CSR and Sustainability projects they undertake during the year ;(Impact of the Projects)

- iii. The expenditure they incur on these activities (vis-à-vis the annual budgetary allocation) ;(Budget of the project)
- iv. The efforts made and the success achieved in the engagement of key stakeholders through adoption of a good corporate communication strategy; (External Stakeholder Involvement)
- v. The adoption of sustainability reporting and disclosure procedures and practices.

The weight age assigned to each of these non-functional performance indicators of companies would be decided during the MoU task force meeting.

The DPE guidelines are in line with the Companies Bill, 2012 which has been passed by the Rajya Sabha on August 9th, 2013.

1.2 Need for Baseline Study

According to the revised guidelines,

“Before taking any final decision on the selection of any CSR and Sustainability project, CPSEs should get an exercise / study done to assess the needs of the intended beneficiaries for a realistic assessment of the resource inputs required for the expected level of social / economic / environmental impact through the implementation of the activity / project.” [Clause 1.4.18]

1.3 New Companies Bill 2012

The Companies Bill 2012, which envisages a slew of changes to rules governing the functioning as well as social responsibilities of corporates, has been passed by the Rajya Sabha.

Spending towards Corporate Social Responsibility (CSR) activities, more responsibility on independent directors and setting up of National Financial Reporting Authority (NFRA), are among the major features of the proposed legislation. As per the proposal, companies have to shell out two percent of their three-year average profit towards CSR activities and in case they are unable to spend the money, they have to provide explanations.

1.4 Collaboration with the NCSR Hub

National Corporate Social Responsibility Hub (NCSRH) was created by the DPE under the guidelines for CSR in Tata Institute of Social Sciences (TISS), Mumbai. TISS, a pioneer educational institution in social sciences, was chosen to establish NCSRH by the DPE for its 75 years of experience and expertise of teaching, research, advocacy, capacity building, publications, documentation, and field interventions. The Hub is created to carry out the following tasks:

☑ Preparation of panels of Agencies for CSR Activity

☑ Nation-wide compilation, documentation, and creation of database;

☐ Training and Competency building

☐ Advocacy; and Research;

☐ Think Tank; Conferences and Seminars

☐ Promotional Activities and Dissemination

The NCSRH comprises of a dedicated team working closely and dealing with CPSEs approaching the Hub for the shelf of activities as per the DPE Guidelines on CSR. The major activities are related to Research in which the Hub conducts Need Assessment Studies and recommends the possible areas of interventions to the CPSEs based on the findings thereof. After receiving recommendations from the Hub, the CPSEs choose from the possible areas of interventions and implement those activities in accordance with their CSR policy and CSR budget allotted for the year. For implementation of the activities, the CPSEs require credible partners in the form of Non-governmental Organizations (NGOs), Trusts, Community-based Organizations etc. For this task, the hub is engaged in a continuous process of empanelling organizations from different states spread across the country. For the purpose, the Hub has an independent team consisting of the faculty from TISS, engaged in scrutinizing the applications of these implementing organizations and shortlist credible organizations on the basis of designed parameters. The Hub also undertakes the Impact Assessment and Evaluation studies for the CPSEs' CSR activities that are undergoing or have been completed even prior to the DPE Guidelines being implemented. The Hub then scrutinizes on-field implementation, effect, benefits and gaps in the programmes and recommends improvements thereof for effectively achieving the programme objectives.

In fulfillment of the DPE guideline, GRSE has signed a MOU with National CSR Hub on 22nd August 2011 with specific terms and conditions for the next 5 financial years from FY 2011- 2012 to 2015-2016. In the MoU under section 2(c) with the captioned heading "Advocacy and Research", specific activities about the baseline survey were mentioned

(ii) To assess the needs of the communities, Baseline Survey may be carried out annually at various locations around different units of GRSE or anywhere else in the country and suggest suitable CSR project under the identified thrust areas of the Company.

1.5 Garden Reach Shipbuilders' and Engineers Ltd.

The Garden Reach Shipbuilders' and Engineers Ltd. (GRSE), a reputed Public Sector Enterprise functioning under the administrative control of the Department of Defense Production, Ministry of Defence, Govt. of India, is engaged in the business of manufacturing a wide range of high-tech modern warships, general engineering activities etc. In September 2009, GRSE was accorded the status of Mini Ratna Category – I. The Company has also been a recipient of the prestigious Raksha Mantri's Award in various categories for 2 years consecutively

1.6 Mission and Vision for CSR

Based on new DPE Guidelines GRSE's CSR Policy was formulated vide Ref. No: SSO/HR&A/HR/0297/, dated 11th November 2010. It states that "As a responsible Corporate Citizen, GRSE utilizes a part of the Company's profit as per Guidelines issued by the Government of India, from time to time, for undertaking various developmental initiatives and projects for inclusive growth of the community and society. As a Company, GRSE strives to go beyond statutory requirements towards making reasonable social, economic and environmental impact."

Chapter 2

Brief Profile of Study Areas: Secondary Data Research

This study has been carried out in KMC wards 76 to 80 and Maheshtala Municipality wards 1 to 10. The KMC wards come under Kolkata district while the Maheshtala wards are under South 24 Parganas district.

2.1 Geographical Profile

2.1.1 Kolkata Municipal Corporation Wards 76 – 80.

Kolkata district is an administrative district of the [Indian](#) state of [West Bengal](#). It contains the center part of the city of [Kolkata](#). As regards civic infrastructure (water, sewage, etc.), the area of Kolkata District is under the administration of the [Kolkata Municipal Corporation](#). But other parts of the city's (that is, the KMC's) area, and of the city's suburban areas, belong to the districts of [North 24 Parganas](#), [South 24 Parganas](#), [Howrah](#), [Hooghly](#) and [Nadia](#).

Kolkata District is bordered by Howrah District, North 24 Parganas District and South 24 Parganas District.

The parliamentary constituencies and assembly constituencies in West Bengal, as defined by [Election Commission of India](#), underwent [delimitation](#) in 2008 according to the report of the [Delimitation Commission](#). [Kolkata district](#) is divided into 11 assembly constituencies — [Kolkata Port](#), [Bhabanipur](#), [Rashbehari](#), [Ballygunge](#), [Chowringhee](#), [Entally](#), [Beleghata](#), [Jorasanko](#), [Shyampukur](#), [Maniktala](#) and [Kashipur-Belgachhia](#).

As per orders of the [Delimitation Commission](#), Vidhan Sabha constituency is composed of the following: Ward Nos. 75, 76, 78 to 80 under Borough IX. Given below is a list of the ward wise population and sex and number of households.

Table 1: KMC Ward wise distribution of population and sex

Ward	Male	Female	Total	Households
76	13504	10744	24248	5135
77	24631	19440	44071	8623
78	32222	26708	58930	10985
79	24632	17597	42229	8908
80	23808	14779	38587	7065
Total	11897	89268	208065	40716

Source: Provisional Census, 2011

The total SC population in Kolkata is 274,385¹ and ST population is 9810.² Ward wise SC/ST populations are given in Table 2.

Table 2: KMC Ward Wise distribution of SC/ST population

Ward No	SC			ST		
	Males	Females	Total	Males	Females	Total
76	249	223	472	17	9	26
77	78	56	134	1	2	3
78	1333	1126	2459	69	60	129
79	1777	1290	3067	222	140	362
80	2391	1871	4262	332	296	628
Total	5828	4566	10394	641	507	1148

Source: Kolkata Statistical Handbook, 2004

2.1.2 Maheshtala Municipality Wards 1 - 10

South 24 Parganas is, indeed, a complex district, stretching from the metropolitan Kolkata to the remote riverine villages up to the mouth of Bay of Bengal, Apart from its staggering size and population, the district administration has to contend with problems typical of metropolitan living in the urban area such as high population density and overload civic infrastructure and in complete contrast, in the rural area the lack of transport and communication facilities and weak delivery systems. 84% of the population lives in the rural areas, where development is taken care of by the panchayat bodies. The remaining 16% population is looked after by the Kolkata Municipal Corporation and seven municipalities. The scheduled caste comprises 39% of the total population and B.P.L. families constitute 37.21% of the population.³

Maheshtala area of South 24 Parganas district is a very old settlement. The name 'Maheshtala' has been named after Mahesh Suri who was collecting tax from this area on behalf of Sri Ramkanta Banerjee, appointed by Lord Clive, the then British Ruler as the tax collection agent. Maheshtala Municipality has emerged on 21/12/1993 as one of the largest municipalities in West Bengal. At present the municipality is divided into 35 wards.

Maheshtala is located at 22.908 latitude and at 88.398 longitude. Its Area is 42.721 sq.km. It is situated on the eastern bank of river Hooghly sharing one fourth of its boundary with KMC. Maheshtala Municipality is the 2nd Largest Municipality in West Bengal.⁴ It is

¹ http://censusindia.gov.in/Census_Data_2001/Census_Data_Online/Population/SC_Population.aspx

² http://censusindia.gov.in/Census_Data_2001/Census_Data_Online/Population/ST_Population.aspx

³ <http://s24pgs.gov.in/s24p/page.php?nm=Historical%20%20Background>

⁴ <http://maheshtalamunicipality.in/>

governed by the Maheshtala Municipality which comes under the Kolkata Metropolitan Region.

As per provisional reports of Census India, population of Maheshtala in 2011 is 449,423; of which male and female are 231,044 and 218,379 respectively. The Kolkata Urban Agglomeration/Metropolitan region has a population of 14,112,536 of which 7,319,682 are males and 6,792,854 are females according to Census of India, 2011.

Geographically the municipality has some unique scopes, side-by-side several cumulative problems. The river Hooghly, the railway tracks, the major arterial road (Budge Budge Trunk Road) are present in this area from long back of the British era and since then has been functioning as the main instruments of urbanization process of this region. Mainly for the port facility and road infrastructure this area gradually became a growth centre of manufacturing units where tailoring industry holds an important position. From the very beginning the economy of this area is based on secondary services which include construction and manufacturing & repairing activities. It is worth to mention here that role of small & cottage industries are as important as that of large & medium scale industries. Tertiary activities like banking, transportation, trading, information technology, health care activities, educational activities, informal services, recreation & social awareness activities are flourishing throughout the municipal area. ⁵

In 2006 the [Ministry of Panchayati Raj](#) named South 24 Parganas one of the country's 250 [most backward districts](#). Maheshtala is also one of the 251 class I and II towns where minority population is 25% or more of total population and have both, socio-economic and basic parameters below the national average.⁶ Given below is the ward wise population and sex and number of households.

Table 3: MM Ward wise distribution of population and sex

Ward	Male	Female	Total	Households
1	392	296	688	1487
2	298	255	553	2237
3	513	390	903	2383
4	540	458	998	1901
5	593	453	1046	2067
6	579	471	1050	3132
7	452	404	856	3751
8	458	351	809	2990
9	434	404	838	2568
10	365	303	668	3165

⁵ <http://maheshtalamunicipality.in/>

⁶ <http://www.minorityaffairs.gov.in/MCDsList>

Source: Provisional Census, 2011

Out of a total population of 449,423 the total SC population in Maheshtala is 56,964⁷ and the total ST population is 2131.⁸ Ward wise SC/ST population for Maheshtala Municipality was not available.

2.2 Educational Profile

Annexure I provides a list of the schools in the study areas. While there are a number of primary schools, the dearth of middle, high and higher secondary schools is evident. When enquired further, children told the research team that beyond class five, they usually have to travel to schools in neighbouring areas. Those who can afford, go to private schools.

In education section, Average literacy rate of Maheshtala is 82.63 percent of which male and female literacy was 86.08 and 78.98 percent.⁹

2.3 Health Profile

The following facilities are provided by the KMC Borough IX in wards 76 to 80.

Table 4: List of Health facilities in KMC Borough IX

Facility Type	Location
Routine Immunization Centres	i. 15, Dent Mission Road, Ward 77, (Kidderpore Disp.), Calcutta Urban Development Project III, Health Administrative Unit ii. 59, Dr. Sudhir Bose Road, Ward 78, Health Administrative Unit iii. 2, Hyde road, Ward 80, Ward Health Unit iv. Bhukailash Road, Ward 79, Ward Health Unit
Malaria Clinic	Kidderpore Maternity Home, 35/1, Ekbalpur Road, Ward 77
Dispensary	Kidderpore Dispensary, 15, Dent Mission Road, Ward 77
Chest Clinic (DOTS)	Manastala Lane, Ward 77
Maternity Home	Kidderpore Maternity Home, 34, Ekbalpur Road, Ward 77

Source: www.kmcgov.in

The research team was able to visit the immunization centers, dispensary and maternity home which are functioning properly. Apart from this, these wards have a fairly large presence of private nursing homes and clinics.

⁷ http://censusindia.gov.in/Census_Data_2001/Census_Data_Online/Population/SC_Population.aspx

⁸ http://censusindia.gov.in/Census_Data_2001/Census_Data_Online/Population/ST_Population.aspx

⁹ <http://www.census2011.co.in/census/city/248-maheshtala.html>

The following health facilities are available in the Maheshtala Municipality area.¹⁰ It should be noted that these facilities are for all the 35 wards under Maheshtala Municipality.

No. of Ambulance: 2

No. of Indian Population Project VIII Centers: 42

No. of Hospitals: 1 with 20 beds

Vaccine Centres: 43

The public health infrastructure of West Bengal is overstretched due to the huge population pressure on the state and because of the fact that a lot of curative services are also rendered through the public healthcare delivery system. 76% of all health institutes in the state are run by the government, compared to 40% in other parts of India (West Bengal Human Development Report 2004).

For a population of 35 wards, Maheshtala has no medical institutions under the health and family welfare department, Government of west Bengal. There is no family welfare center. There are only 2 ambulances under the Municipality. The Municipal hospital is located in ward 16.

While the doctors at the MM Hospital were unavailable, one doctor from the Santoshpur nursing home told the research team that a large majority of the population suffers from vector borne diseases and water and food borne diseases. Owing to the unhygienic living conditions, lack of sanitation, unsafe drinking water diseases like kala-azar, malaria, filaria, diarrhea and fever are most common.

¹⁰ http://jnnurmwestbengal.gov.in/HTM/ULB_Profiles/Maheshtala.htm

Chapter 3

Research Methodology

3.1 Context of the Study

According to CSR guidelines issued in the year 2010, CSR interventions should start with the identification of activities/projects based on the needs of the affected communities. The geographical locations were selected by GRSE in accordance of Article 2.1 of the CSR Guidelines 2010 and the revised guidelines issued in 2013 according to which PSEs are required to focus on backward districts (South 24 Paraganas). Emerging areas of intervention broadly are education, drinking water, sanitation which are in accordance with the possible areas of CSR interventions of GRSE. An effective CSR intervention is one which not only supports the communities in their socio-economic and environmental development but also builds a positive image of the company in the eyes of the masses. It is also important to avoid any kind of duplication in the intervention in order to provide maximum benefit to the communities. Collaboration with different stakeholders and especially with government departments, therefore, is a must.

Objective of the Study

The objective of this study is to conduct a baseline study and identify future projects for FY 2013 – 14. More specifically, the objective is to assess the needs in the areas of healthcare, education and skill development and community development.

3.3 Research Design

The research design was of this study was exploratory. Exploratory studies help the researcher to acquaint themselves with the characteristics of a research problem¹¹. Data was collected on the basis of sample household survey as well as in depth interviews with local authorities. Also, qualitative methods were applied as and when required.

3.4 Study Tools

A household questionnaire has been used. The Household Questionnaire seeks the information from the household about their socio-economic background.

3.5 Sampling

A sample of 1005 households was interviewed. The method of sampling used was *Systematic Random Sampling*. In this method of sampling, each and every unit has an equal

¹¹ Page 147, Social Work Research, School of Social Work, IGNOU

chance to get selected in the sample. Systematic Sampling provides a more even-spread of the sample over the population list and leads to greater precision¹² In order to select the households to be interviewed; voter's list of every ward was referred. From this list desired sample size was obtained.

3.6 Research Process

After the research team received the list of study areas, the study started with secondary data research. Government reports, official web portals and other official information were referred for the study. This was followed by primary data collection on field. After data was collected, it was analyzed with the help of SPSS. This was followed by data interpretation and report writing.

¹²

Ibid, Page 209

Chapter 4

Findings from the Field

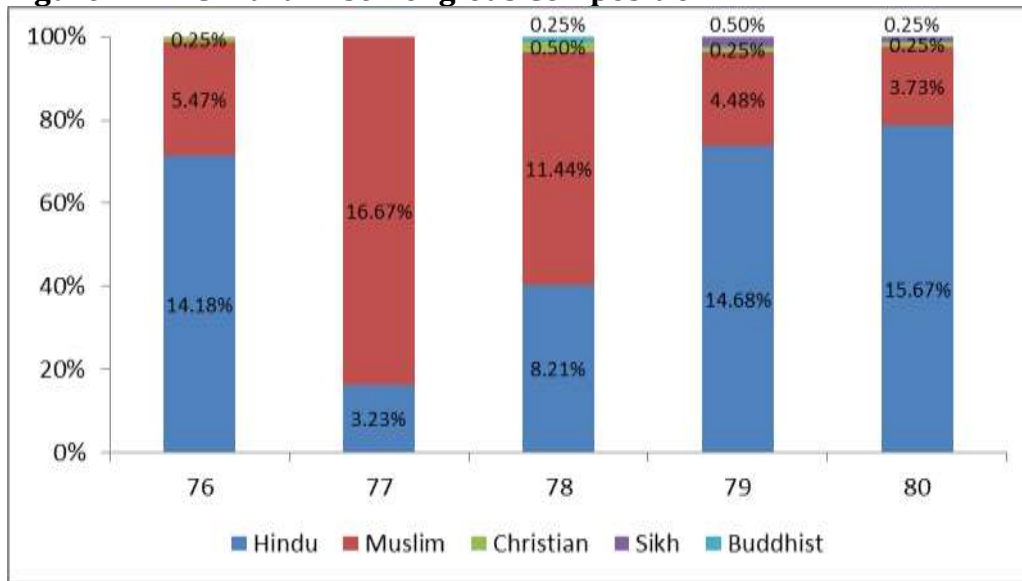
A total of 1005 respondents were interviewed. Out of these, 404 respondents were from the KMC wards while 601 respondents were from the MM wards. Out of the total respondents, no respondents were from the physically handicapped category.

4.1 Respondents Profile: KMC Wards 76 – 80

The background of the 404 respondents interviewed is detailed below.

4.1.1 Socio-Economic Profile

Figure 1: KMC Ward wise Religious Composition



According to figure 1, Hindus constitute a total of 55.97% while Muslims constitute a total of 41.79%. Christians (1.25%), Sikhs (0.50%) and Buddhist (0.25%) constitute a small percentage as can be seen.

Figure 2: KMC Ward wise Category Composition

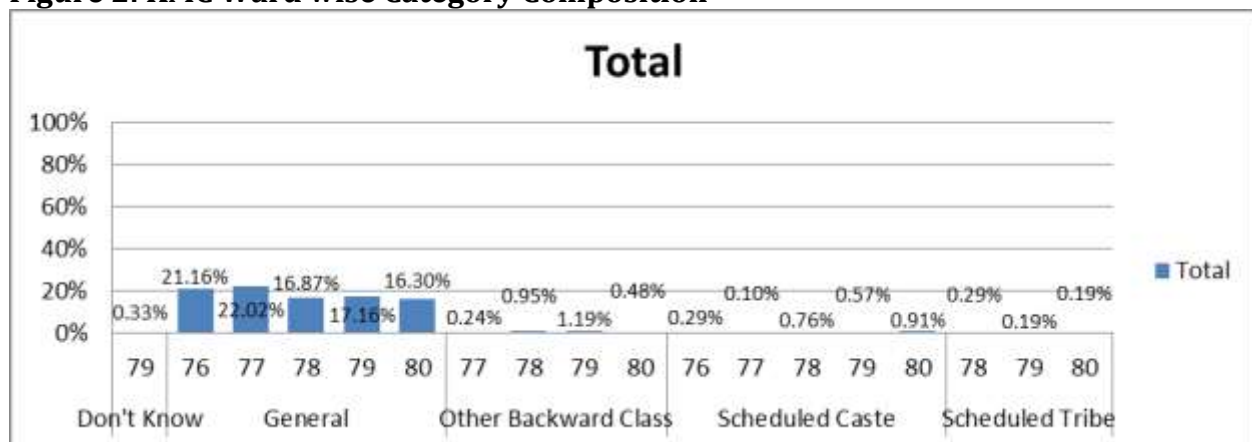
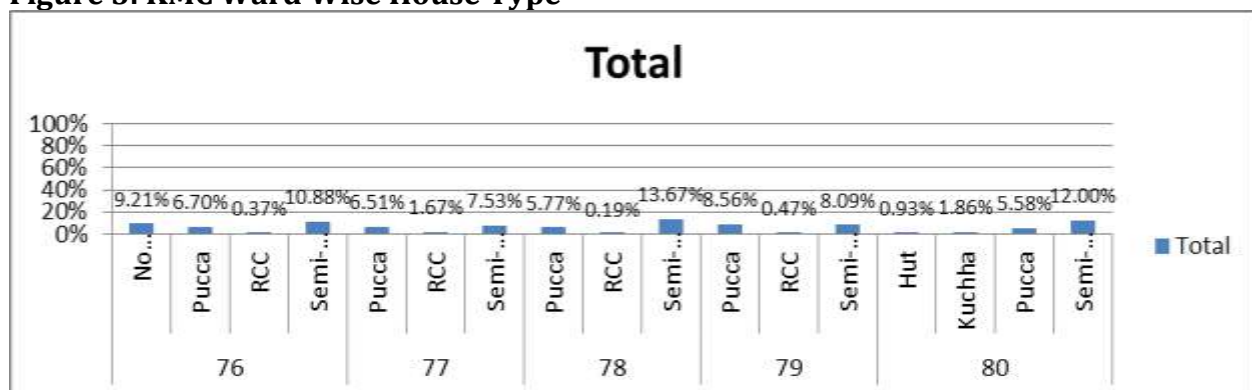


Figure 2 clearly shows that the KMC wards 76 to 80 are predominantly occupied by the general category. SCs, STs and OBCs constitute a minority percentage of the population.

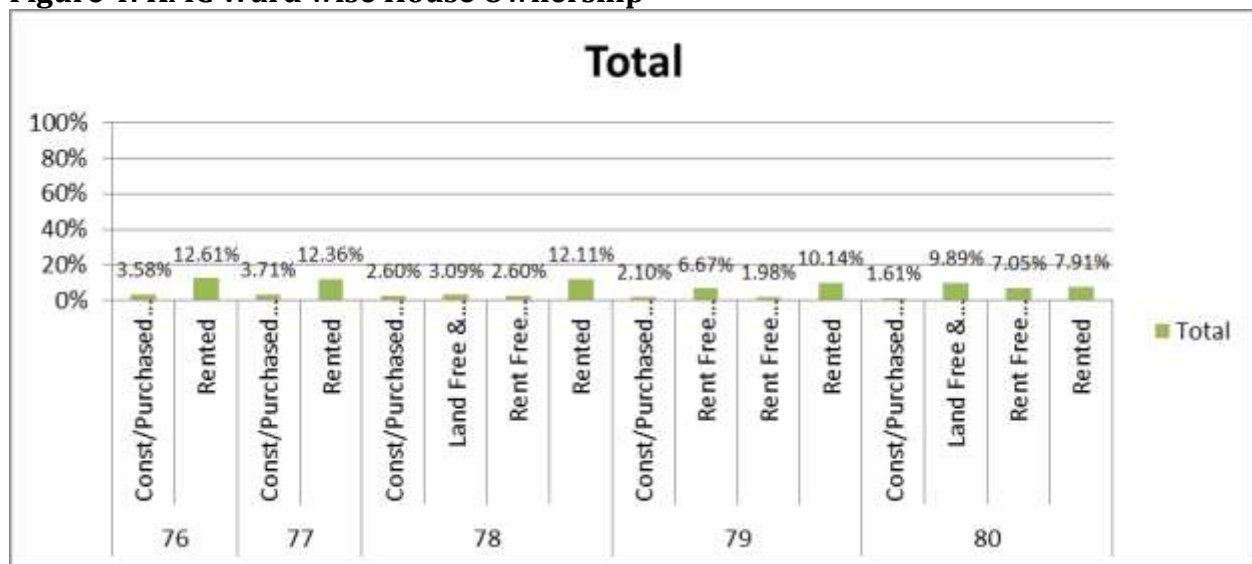
4.1.2 Housing Pattern

Figure 3: KMC Ward Wise House Type



Out of the total respondents, 34.12% live in pucca houses; 2.7% live in RCC houses; while a majority of 52.17% lives in semi pucca houses. The distribution of the same is given in figure 3.

Figure 4: KMC Ward wise House Ownership



As has been shown in figure 4, 13.6% of the total respondents live in settlements constructed/purchased/owned by family. 55.13% live in rented houses. 12.98% of the respondents live in land free and own construction houses. 16.32% live in rent free (relatives) houses. While the remaining 1.98% live in rent free (employers) homes.

4.1.3 Health

Figure 5: KMC Ward wise Health Seeking Behaviour

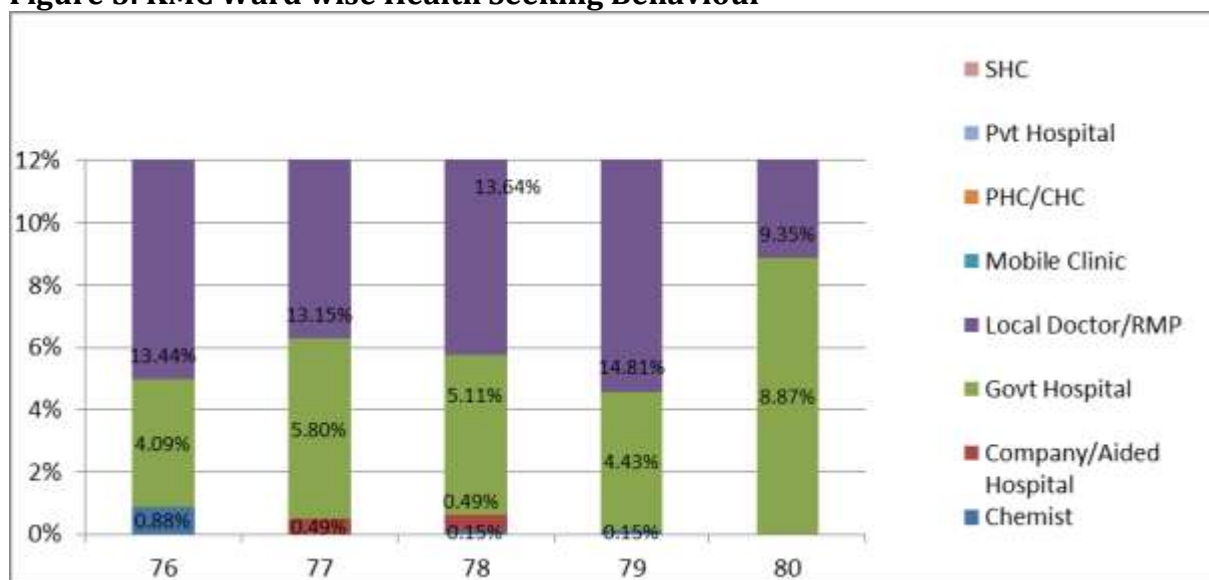


Figure 5 shows that a large majority of the population go to the government hospitals or local doctors for their health needs. A very small percentage goes to private hospitals. A detailed list of health institutions in the survey area has been provided in Annexure I

4.1.4 Education

Table 5: KMC Ward wise Educational Status

Ward Number	76	77	78	79	80
Educational Level					
Bachelor 2nd year	0.25%	0.25%	0.25%	0.25%	0.75%
Bachelor 3rd year/Completed Graduation	0.75%	0.25%	1.49%	0.25%	1.49%
Eighth	0.75%	1.00%	2.99%	0.75%	0.25%
Fifth	2.24%	2.24%	0.75%	0.75%	1.49%
First	1.24%	0.50%	1.49%	2.24%	0.75%
Fourth	1.00%	1.24%	1.74%	1.24%	1.49%
Illiterate	4.48%	4.73%	0.75%	1.00%	5.97%
Master 1st year	0.25%	0.25%	5.22%	4.48%	0.25%
Master 2nd year/Completed Post-graduation	0.50%	0.25%	0.75%	0.25%	1.00%
Ninth	0.50%	0.75%	0.75%	0.50%	0.25%
Seventh	0.50%	0.50%	1.00%	0.50%	1.24%
Sixth	1.00%	0.50%	0.50%	0.50%	1.00%
Tenth	3.23%	2.49%	1.49%	1.00%	0.25%
Third	0.50%	1.00%	1.00%	3.23%	1.49%
Twelfth	1.74%	1.74%	0.25%	0.50%	1.74%
#N/A	0.75%	0.25%	20.40%	1.74%	0.50%
Blank	0.25%	1.99%	0.25%	0.75%	19.90%
Grand Total	19.90%	19.90%	20.40%	19.90%	19.90%

As is clearly visible in table 8, literacy levels are extremely poor in wards 76 to 80. A large majority of the population is illiterate.

4.1.5 Occupation

Table 6: KMC ward Wise Occupational Status

Ward Number	76	77	78	79	80
Occupation					
Non Agriculture Labour	0.07%	0.10%	0.07%	0.07%	0.10%
Petty Business/Trade	0.71%	1.16%	0.54%	0.45%	0.09%
Salaried (Local/Consolidated)	0.17%	0.17%	0.11%		
Salaried (Scale Based)	0.18%	0.13%	0.04%	0.62%	0.49%
Contractor/Broker		0.08%			
Artisan/Craftsman/Household Industry			0.07%		
Livestock Rearing			0.10%		
Other	0.21%				0.21%
None	8.65%	8.65%	2.16%	3.25%	5.41%
Blank	17.09%	7.62%	20.54%	9.61%	11.08%

Grand Total	27.08%	17.91%	23.63%	14.00%	17.38%
--------------------	---------------	---------------	---------------	---------------	---------------

A large majority of the total respondents are unemployed (refer to none/blank). Mostly, people are occupied in petty businesses like construction/repairing/tailoring.

4.1.6 Sanitation

Table 7: KMC Ward wise Sullage Conditions

Ward Number	Water Stagnation	Drainage/Sewage	Cattle Based Waste	Open Defecation	Air Waste Dumping
76	19.72%	17.16%	23.53%	18.64%	14.81%
77	19.25%	17.65%	11.76%	13.56%	14.29%
78	23.00%	25.98%	5.88%	18.64%	21.69%
79	17.84%	20.10%	23.53%	22.03%	23.81%
80	20.19%	19.12%	35.29%	27.12%	25.40%
Total	100.00%	100.00%	100.00%	100.00%	100.00%

Table 10 is indicative of the factors that have led to the extremely poor drainage and sullage conditions that exist in these areas.

Figure 6: KMC Ward wise Toilet Type

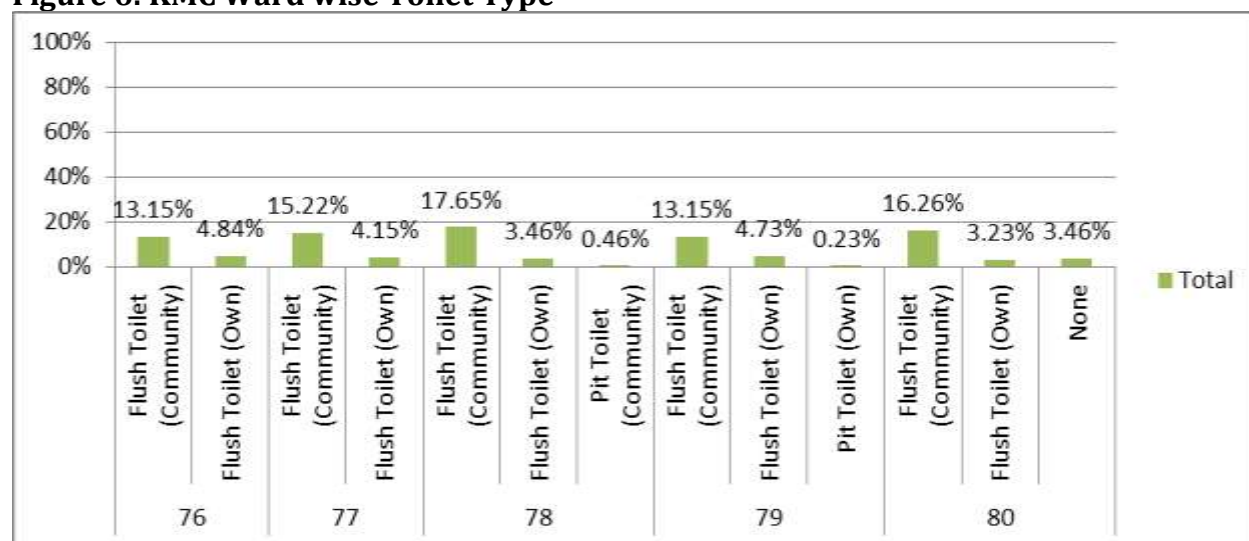


Figure 6 shows that 75.43% of the total respondents use community toilets. 20.41% have toilets of their own. 0.69% use community pit toilets. It is important to note here that community toilets are mostly used by men. Women and young girls prefer to defecate in their houses, if they do not have a toilet. Also, these community toilets are extremely unhygienic and stink making it a hotbed of diseases to those living in and around it.

4.1.7 Drinking Water

Figure 7: KMC Ward wise Drinking Water Sources

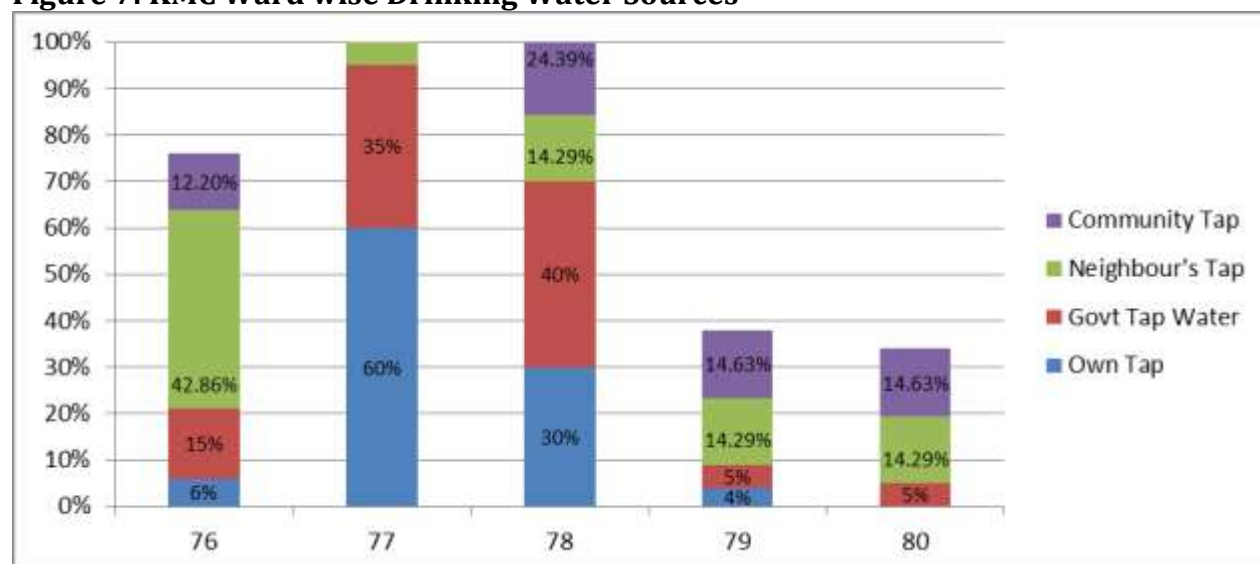


Figure 7 gives an idea of the various sources of drinking water. While tap water is a major source for those living in wards 77 and 78, it does not find mention in ward 80. The second largest source of water is neighbour's tap. Government tap water and community tap are other sources of drinking water. It is important to mention here that water doesn't come regularly. Fresh water comes for 2 hours in the morning and 2 hours in the evening. The quality of water, as informed by respondents, is also not portable.

Drinking water in KMC wards 76 to 80 is provided from section 'M', 39, Circular Garden Reach Road (At Sudhir Bose Road and C.G.R.D. Road Junction).

For MM wards, water is supplied from the following sources by Kolkata Metropolitan Water and Sanitation Authority:

1. Garden Reach Water Works (GRWW) (Phase I) 60 MGD (Surface Water Based Treatment Plant). This covers the areas of South Kolkata (KMC), Budge Budge, Maheshtala and Pujali. Its production capacity is 60 million gallons of water per day. Its salient features include intake jetty, raw water rising main, raw water pump house, treatment plant, clear water pump house, clear water underground reservoir, primary and secondary grids.
2. Garden Reach Water Works (Phase II) 60 MGD (Surface Water Based Treatment Plant). This covers the areas of South Kolkata, South suburban (Behala) unit, Garden

Reach unit, Jadavpur unit (part) and Budge Budge, Maheshtala and Pujali municipalities. It has the same features as the GRWW Phase I project.

3. There is also a 5 MGD Capacity UGR-cum-Booster Pumping Station at Maheshtala to provide surface water from GRWW to Maheshtala/Budge Budge/Pujali municipalities. This project is part of the Jawaharlal Nehru National Urban Renewal Mission.
4. Under the state fund, the rehabilitation and replacement of old machinery of GRWW Phase I along with replacement of primary grid of GRWW is also being carried out.
5. Under the megacity fund, the stabilization and extension of primary grid under GRWW phase II Megacity is also being carried out. This will cover the southern part of KMC; Budge Budge, Pujali and Maheshtala municipalities.

4.1.8 Disability

The state of West Bengal has issued the West Bengal Persons with Disabilities (Equal Opportunities, Protection of Rights and Full Participation) Rules 1999 to implement the provisions under the central Persons with Disabilities (Protection of Rights, Equal Opportunities and Full Participation) Act 1995.

The Department of Women and Child Development and Social Welfare is primarily responsible for the welfare of persons with disabilities in the state. The government of West Bengal has issued six notifications in education, ten notifications in employment and training, ten notifications in health and rehabilitation, ten notifications in social protection and two notifications in transport for persons with disabilities.

The state also implements the provisions under the central Persons with Disabilities (Protection of Rights, Equal Opportunities and Full Participation) Act 1995 (Persons with Disabilities Act) and The National Trust for the Welfare for Persons with Autism, Cerebral Palsy, Mental Retardation and Multiple Disabilities Act 1999 (National Trust Act). Persons with Disabilities who have a minimum of 40 per cent disability are eligible for the benefits and schemes offered by the government.

Given below is the population of physically handicapped persons in Kolkata district. Ward wise data for the same was not available.

Table 8: Disabled persons by the type of disability and sex in Kolkata District

Type of Disability	Males	Females	Total
In Seeing	32853	24937	57790
In Speech	3688	2913	6601
In Hearing	2072	1722	3794
In Movement	11356	8874	22210

Source: District Census Handbook, 2004

4.2 MM Wards 1 to 10

It is important to point out here that the MM wards 1 to 10 are part of the Metiabruz Constituent Assembly along with the Garden Reach area. Demographically, both areas are quite similar.

The background of the 601 respondents is given below.

4.2.1 Socio-Economic Profile

Figure 8: MM Ward wise Religious Composition

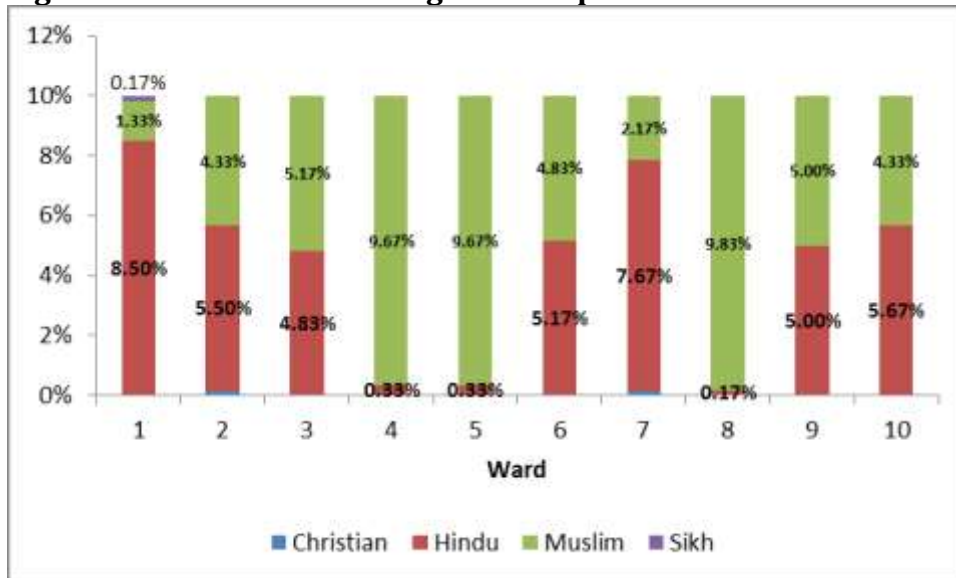
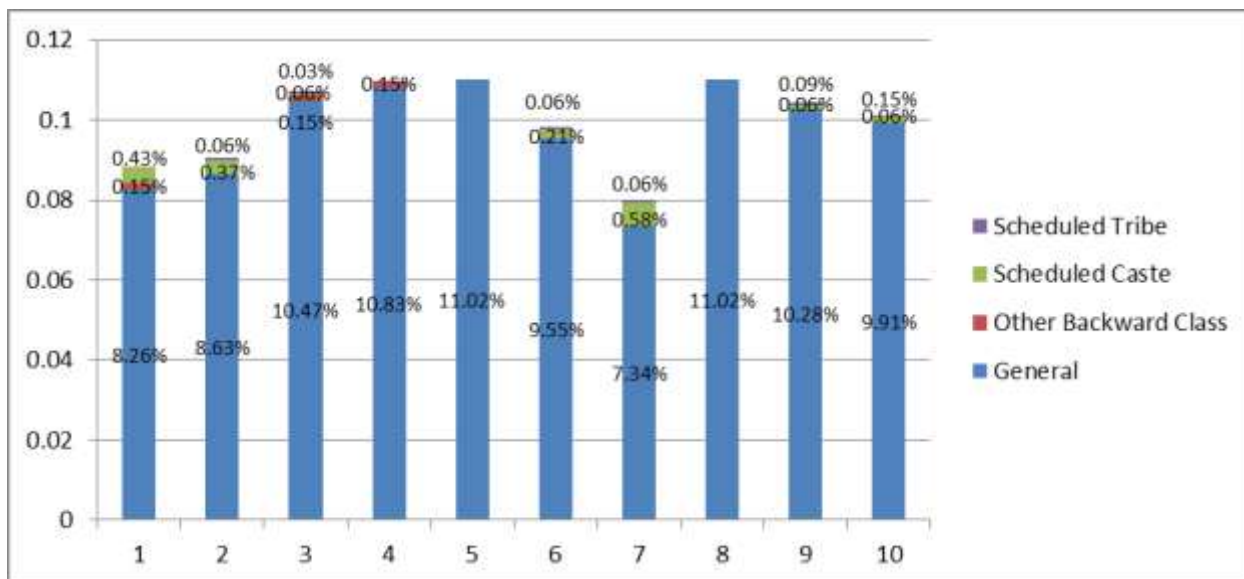


Figure 8 clearly shows that the majority of the respondents are Muslims; while Hindus form the second largest community. Sikhs and Christians constitute a minority.

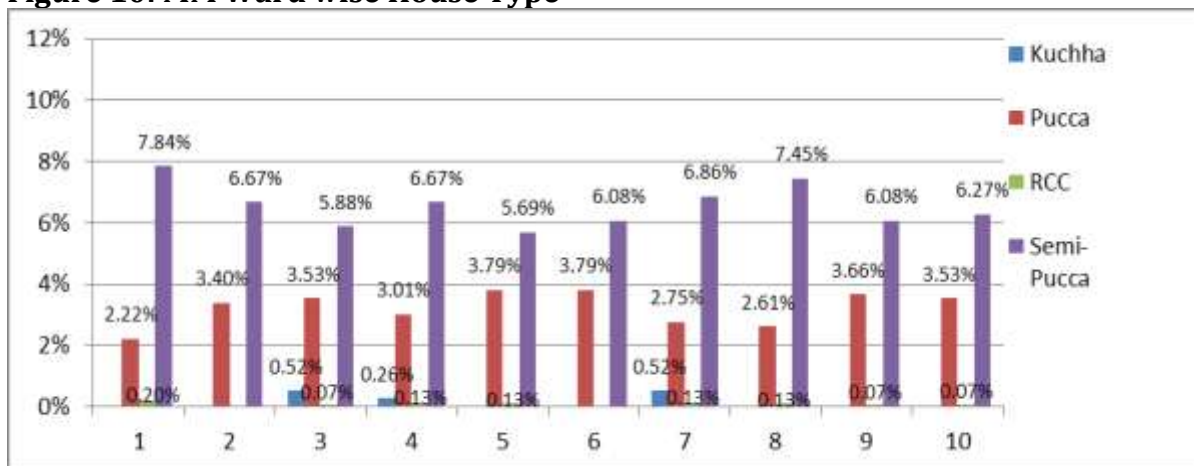
Figure 9: MM Ward wise Category Composition



As shown in figure 9, a very small section of the population is under SC/ST category. The main reason behind this is that the Muslim community dominates the overall population in the Maheshtala areas.

4.2.2 Housing Pattern

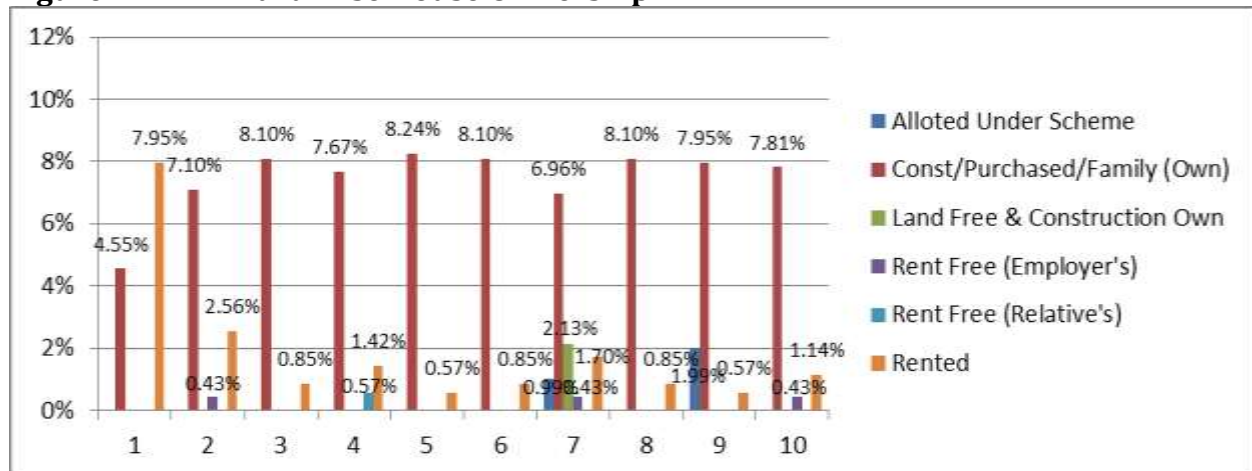
Figure 10: MM Ward wise House Type



Majority of the respondents live in semi pucca houses as is clearly evident in figure 10. People living in kuchha houses comes a close second. Interestingly, a lot of the area is unauthorized encroachments. During our field visits as well, we observed the rapid growth in building construction in low lying areas (without verification of their authorization). Any natural disasters, like earthquakes, will destroy much in this area with respect to wealth

and lives. Also, there are no fire prevention mechanisms in the area. Given the width of the lanes, the area is extremely vulnerable to any fire mishap.

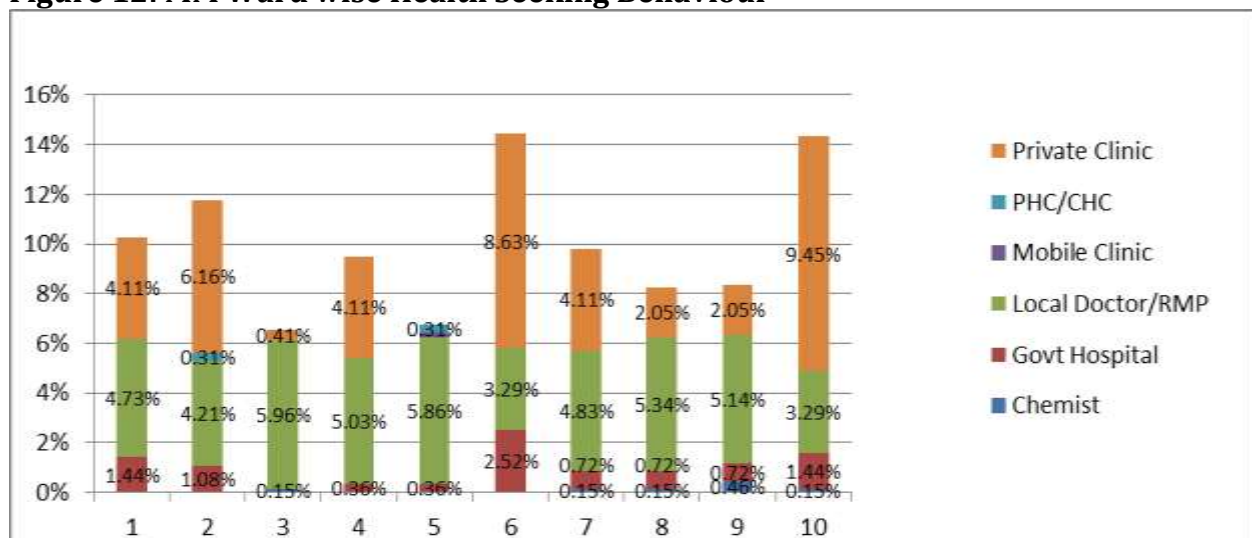
Figure 11: MM Ward wise House Ownership



Most people live in settlements that are constructed/purchased/belong to their family. A section of the population also lives in rented houses. 2.13% live in houses constructed by themselves. The percentage of those living in rent free houses (relatives/employees) or allotted under schemes is miniscule.

4.2.3 Health

Figure 12: MM Ward wise Health Seeking Behaviour



As shown in figure 12, mostly people go to the innumerable unregistered private clinics and local doctors to address their health concerns. A very small section however does go to the government hospital. This is primarily because the government health infrastructure isn't enough to cater to the vast population. As mentioned earlier, there is only one municipla hospital for all 35 wards with 20 beds that is located in ward number 16 of Maheshtala Municipality.

4.2.4 Education

Table 9: MM Ward wise Educational Status

Ward No	1	2	3	4	5	6	7	8	9	10	Total
Educational Level											
Bachelor 1st Year			0.17%								0.17%
Bachelor 2nd Year	0.17%				0.17%				0.17%		0.50%
Completed Graduation	0.67%	0.50%	0.50%		0.17%	0.17%	0.83%		1.34%	0.33%	4.51%
Doing M Phil.									0.17%		0.17%
Eighth	1.17%	1.34%	1.17%	0.50%	1.00%	1.34%	1.17%	0.33%	0.50%	1.17%	9.68%
Eleventh							0.17%				0.17%
Fifth	0.50%	0.50%	0.50%	1.17%	1.00%	1.50%	0.83%	1.50%		0.17%	7.68%
First	1.17%	0.83%	0.67%	1.84%	0.67%	0.17%	0.67%	0.67%	0.83%	0.33%	7.85%
Fourth	0.50%	0.67%	1.34%	0.50%	1.17%	1.34%	0.50%	1.00%	0.33%	1.50%	8.85%
Illiterate	1.17%	2.00%	2.67%	3.67%	3.17%	2.00%	2.67%	3.51%	2.34%	2.17%	25.38%
Master 2nd Year					0.17%				0.17%		0.33%
Ninth	0.83%	0.67%	1.00%	0.17%	0.33%	0.17%	0.33%	0.17%	0.83%	0.50%	5.01%
Second	0.33%	0.17%	0.50%	0.17%	0.17%		0.17%	0.17%	0.17%	0.33%	2.17%
Seventh	0.50%	1.00%		0.17%	0.67%	0.50%	0.83%	0.33%	0.33%	0.33%	4.67%
Sixth	0.83%	0.50%	0.33%	0.17%	0.33%	0.83%	0.17%	0.67%	0.67%	0.50%	5.01%
Tenth	1.34%	0.83%	0.67%	0.67%	0.33%	1.17%	1.17%	0.33%	1.00%	1.67%	9.18%
Third	0.33%	0.33%	0.17%	0.50%	0.50%	0.33%	0.17%	0.83%	0.50%	0.17%	3.84%
Twelfth	0.33%	0.67%	0.33%	0.50%	0.17%	0.50%	0.33%	0.50%	0.67%	0.83%	4.84%
Grand Total	9.85%	10.02%	10.02%	10.02%	10.02%	10.02%	10.02%	10.02%	10.02%	10.02%	100.00%

Table 12 shows that a very large section of the population (25.38%) is illiterate. Some have studied till class 8th while very few have gone on to pursue higher secondary education.

4.2.5 Occupation

Table 10: MM Ward wise Occupational Status

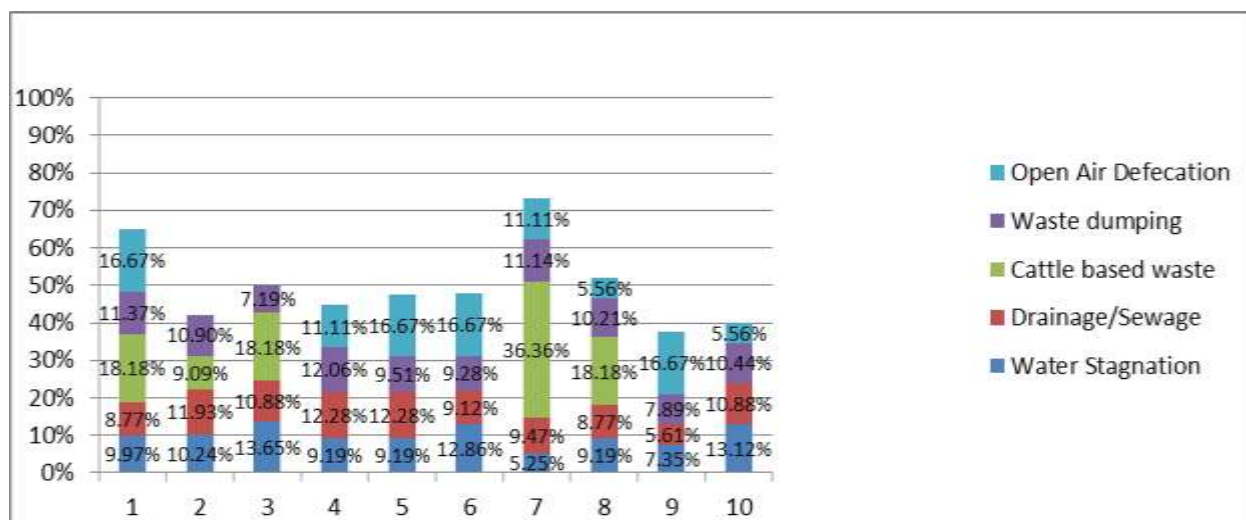
Occupation	Artisan/	Contrac	House	Non	None	Petty	Salaried	Salaried	Grand
------------	----------	---------	-------	-----	------	-------	----------	----------	-------

Ward Number	Craftsman/Household Industry	tor/Broker	wife	Agriculture Labour		Business/Trade	(Local/Consolidated)	(Scale Based)	Total
1		0.17%	0.83%	4.17%	1.83%	1.17%	0.67%	1.17%	10.00%
2			0.83%	5.50%	1.00%	1.17%	0.83%	0.67%	10.00%
3			0.83%	3.67%	3.17%	1.83%	0.33%	0.17%	10.00%
4			0.33%	6.33%	2.50%	0.83%			10.00%
5			1.17%	5.33%	1.33%	2.17%			10.00%
6	0.17%		0.67%	5.17%	2.50%	1.00%	0.17%	0.33%	10.00%
7			0.33%	4.50%	2.50%	1.67%	0.67%	0.33%	10.00%
8	0.17%		0.50%	4.67%	2.33%	2.00%	0.33%		10.00%
9			0.33%	3.17%	3.50%	1.33%	0.83%	0.83%	10.00%
10			1.00%	3.17%	3.33%	1.33%	0.33%	0.83%	10.00%
Grand Total	0.33%	0.17%	6.83%	45.67%	24.00%	14.50%	4.17%	4.33%	100.00%

A significant percentage of the population works in manufacturing or construction or repairing shops. Tailoring is also quite common amongst women and girls.

4.2.6 Sanitation

Figure 13: MM Ward wise Sullage Conditions



Cattle based waste is one of the largest factors that contribute to the degrading sullage conditions in these areas. Add to this open air defecation, and one has a perfect recipe for disastrous living conditions. There is an ongoing clash between the KMC officials and local slum dwellers about the disposal of garbage. While the officials claim that the locals' attitude hasn't changed, the locals blame the irregular service delivery of MM.

Table 11: MM Ward wise Toilet Type

Ward Number	Flush Toilet (Community)	Flush Toilet (Own)	Pit Toilet (Community)	Pit Toilet (Own)	None	Total
1	6.66%	2.50%	1.85%	0.56%	0.56%	12.12%
2	0.83%	3.24%	3.33%	2.04%	1.11%	10.55%
3	1.39%	3.24%	0.37%	2.59%	2.78%	10.36%
4	1.39%	3.52%	2.59%	1.85%	0.00%	9.34%
5	0.56%	3.89%	1.11%	2.04%	1.11%	8.70%
6	1.39%	3.70%	1.48%	1.85%	0.56%	8.97%
7	0.83%	2.68%	1.11%	2.59%	6.11%	13.32%
8	2.50%	3.33%	0.00%	2.41%	1.11%	9.34%
9	1.39%	3.98%	0.74%	1.30%	1.67%	9.07%
10	1.39%	4.07%	0.00%	1.67%	1.11%	8.23%
Grand Total	18.32%	34.14%	12.58%	18.87%	16.10%	100.00%

It is clearly evident that inspite of there being community as well as own toilets, a large population still doesn't use either of the facilities and prefers open defecation.

4.2.7 Drinking Water

Figure 14: MM Ward wise Drinking Water Sources

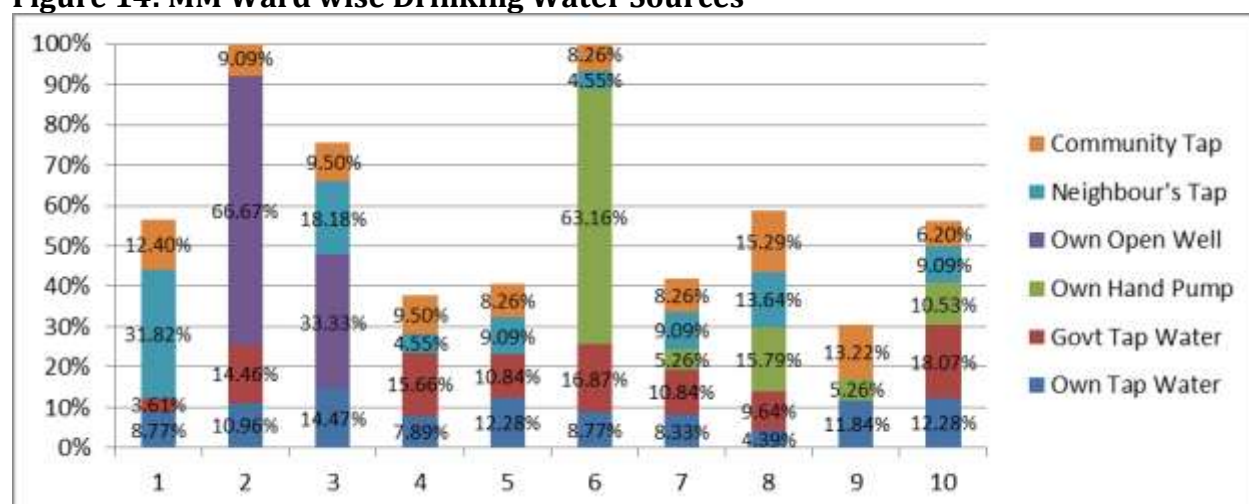


Figure 14 shows us that one of the biggest sources of drinking water is the open well. However, the open well is only available in wards 2 and 3. People in wards 6 – 10 use own hand pump for water. A large section also uses the neighbour's tap as their daily source of water. Community taps are also used by people in all the wards. Here, too, water is not regular. Owing to the terrible surroundings of the water sources, the quality of water is also affected.

4.2.8 Disability

Even though the state of West Bengal has a variety of provisions for disabled persons, there is no independent/separate department for disabled people. Given below is the urban total population for physically handicapped persons in the south 24 Parganas district. Ward wise data for the same was not available.

Table 12: Disabled Persons by type of disability and by sex in South 24 Parganas (Urban)

Type of Disability	Males	Females	Total
In Seeing	6129	5008	11137
In Speech	983	796	1779
In Hearing	487	412	899
In Movement	2708	1531	4239

Source: District Census Handbook, 2009

Recommendations

It is important to point out here that on the basis of above mentioned findings and requirements of GRSE as mentioned in an email dated 3rd June, 2013 *“Baseline Survey in line with GRSE CSR Policy identified thrust areas of Healthcare, Education & Skill Development and Community Development. Further, special emphasis may be given to data / recommendation on SC/ST population and physically handicapped persons.”* In order to do this, attempts have been made to collect ward level data from Borough IX of KMC. However, in spite of repeated attempts at contacting the MM wards officials and visiting their offices, ward wise data for MM wards have been difficult to obtain. The research team has focused on suggesting such recommendations as have been expressed by the respondents and that attempt to minimize the basic problems.

5.1 Sanitation

5.1.1 Disposal of Solid Waste

The drainage system of the KMC wards is extremely pathetic on account of being low lying areas. An Assistant Engineer (Civil) of the KMC, Borough IX, informed us that the drainage connectivity within the area is inadequate. The creation of an integrated drainage system is absolutely essential to upgrade sanitation levels. There is no drainage outflow and no underground drains, leading to dirty water flowing into the premises of the houses. An underground sewerage connected to the house drain project is being carried out by the Kolkata Environment Improvement Project (KEIP) to improve the sanitary conditions. During monsoons, the conditions worsen as water accumulates. Added to this is the dumping of solid waste in the open. There are no garbage bins; waste is not cleaned regularly and ends up being collected in the drains.

Uncontrolled dumping of solid waste is practiced in majority of the MM wards. This practice causes aesthetic pollution and also degrades the environment. Composting, an environmentally friendly way of disposal is practiced in a handful of these areas. The major problems in solid waste management are due to lack of waste segregation at source, low percentage of house-to house collection, large number of open vats, low operational efficiency of waste transport system with old vehicles, low collection efficiency in newly added areas, and an inefficient informal recycling system. In order to improve the conditions, underground sewerage is proposed to be implemented by KMDA under JNNURM in the MM wards.

For better sanitation conditions, house-to-house collection of solid waste should be organized through methods like collection on regular pre-informed timing and scheduling. The collection bins must be appropriately designed with features like metallic containers with lids, and to have a large enough capacity to accommodate more than the expected waste generation in the area.

Recycling of solid waste needs to be encouraged. Rag pickers and scavengers involved in salvaging recyclable inorganic solid waste could be involved in the organized process of recycling of solid waste. Such involvement would improve the socio-economic conditions of the scavengers/rag pickers.

GRSE in collaboration with the ward committees could play a vital role for effective segregation, containerized collection and efficient transportation system. GRSE may treat this as a last mile requirement.

5.1.2 Construction of Toilets

Provision of education must be made accessible to more and more girls to eliminate gender disparity and nurture a new generation. Education of women is an important key to improving health, nutrition and education in the family and also empowering them to participate in decision-making. Our visits to the local schools in the KMC wards have brought to light the extremely unhygienic toilet facilities that the girls have to use. This may be one of the reasons of lower participation rates of girls in education especially at upper primary level.

Lack of sanitation facilities has left the locals with no choice but to openly defecate. Even women and young girls have to go out in the open. Adding to such unhealthy living conditions is the open garbage disposal system. During our visits to local schools in the MM wards also, we saw that the toilets for girls are in a very bad state. With no continuous supply of water, the situation gives way to health hazards. During monsoons, the conditions are worse. Construction of toilets to curb open defecation has been given priority in the 13th Finance Commission especially in the Maheshtala Municipality.

Separate toilet facilities for girls must be created in the school premises. This must also cover the security aspect for girls. At the same time, toilet facility is also needed for female teachers. GRSE may take up any project with KMC/MM at the field level action research basis. Construction of ladies toilet and sanitation should be given priority.

5.2 Education

Table 4 indicates that there are enough primary level schools for children in the KMC wards. Data for upper primary and secondary schools was unavailable on the KMC website or with the concerned KMC officials. While carrying out the survey, the research team observed that a lot of children between the age group of 9 – 14 have dropped out from school. The most important cause behind this is the use of child labour or use of children as domestic help. It is unfortunate that poor parents often are compelled to treat their child as an income earning asset. They induce children to leave schools and join the workforce and thus earn income for the household. Students studying at the primary level are not generally capable to join the labour force. But as age increases, a child becomes a child labour and drops out from the education system.

Out of all the municipalities in South 24 Parganas, Maheshtala tops the list with 61.08% of children in the age group of 9 – 14 years who drop out of schools to join the workforce either inside or outside the family.¹³ Income concerns constraints female education more stiffly than male education. This is more often than not due to parental unwillingness to support studies of the girl child or to early marriage of the girl child.

Provision and accessibility to school level infrastructure are important factors in achieving education. Students may have to travel a lot to commute to schools and may incur monetary costs for the same. Apart from this, availability of basic amenities such as drinking water and sanitation in school premises also affect the strength of the school. Lack of sanitation facility is a major problem for girl children. As of 2006 – 07, only 18 schools in the entire MM area had toilets and 9 schools had drinking water facility.¹⁴

With reference to the notification circulated by Sarva Shiksha Mission, Kolkata, Government of West Bengal vide 06 (2000)/CM & AS/SSM/KOL, dated 03.01.2012, it is now mandatory to provide free education to all. Having visited some of the schools in both municipalities, the research team feels that the number of schools – municipality owned, government run or private board- is sufficient. GRSE may approach schools only for infrastructure up gradation. Better sanitation facilities and provision of basic school infrastructure are areas that need intervention.

5.3 Skill Development

During field visits, it has been observed that, in general, people are nonproductive. Men are seen passing their time by playing cards. Street vendors are prevalent. A very large number of rickshaw pullers and vans are observed on the roadside. During ward visits, we have observed that a large section of the population is engaged in tailoring. The economy of this area is based on secondary services which include construction and manufacturing & repairing activities. But, this industry is mostly spread out in an unorganized way. People work under different middle men and are paid lower wages compared to market rates. On the other hand, zari work is one of the predominant activities of the women and young age group. Tailoring and colouring in the garment industry are also readily available jobs. Cheap garment manufacturers and suppliers are also available in this locality. It is home to a large number of unskilled labourers who have settled here from rural areas in West Bengal and Bihar, and are employed on daily wages. This includes construction workers, cleaners, plumbers, and painters.

¹³ <http://wbplan.gov.in/HumanDev/DHDR/24%20pgsSouth/Chapter%2005.pdf>

¹⁴ <http://wbplan.gov.in/HumanDev/DHDR/24%20pgsSouth/Chapter%2005.pdf>

All these reflect the existence of informal economic activities in the locality. In the baseline study conducted previously for FY 2012 – 13, it was recommended that “to convert this into formal economic activity, creation of a business hub in collaboration with the Industry Department, Government of West Bengal will be a great contribution towards generation of vocation to the locality. Any type of entrepreneurial development support will also help local people to improve their economic condition.” GRSE may take initiatives towards the same by way of contacting the Confederation of Indian Industries or the National Skill Development Corporation. These agencies are already running skill development programmes in partnership with other PSUs in Kolkata and other districts of West Bengal.

Keeping in mind the fact that MM areas thrive on the tailoring industry, GRSE may also provide support towards setting up a training centre for knitting and embroidery etc. Training in electrical wiring, domestic BPO call centers, hospitality, retail may be looked at.

Since the area is prone to fire mishaps, GRSE may contact NGOs working on Skill Development and conduct programmes for the local youth in fire prevention, security measures. Providing computer skills could also be looked at. These will open up avenues for employment for the local population.

5.4 Health

It is clear from the data in figure that large sections of the population uses facilities provided by the KMC and are satisfied with it. Local doctors are also quite popular. A very small section accesses the private clinics/hospitals to address their health needs.

In MM wards, people prefer visiting private clinics and local doctors. This is owing to the fact that they are located in close proximity to the city of Kolkata and mostly because the government/municipal health facilities are not enough to cater to the huge population.

In light of the existing facilities in MM wards, GRSE may provide ambulances to those medical institutions/NGOs in requirement of the same. GRSE may also approach the local hospitals for infrastructure up gradation.

5.5 Drinking Water

Water in the KMC Wards is supplied from Section 'M', 39, Circular Garden Reach Road (At Sudhir Bose Road and C.G.R.D. Road Junction). Water supply in the MM wards is catered from Garden Reach water treatment plant (WTP) operated by KMWSA. Garden Reach water treatment plant has a rated capacity of 270 MLD but actual production is about 225 MLD of which 180 MLD is supplied to KMC service areas (mainly Garden Reach & South Suburban area) and 45 MLD to adjacent Maheshtala municipality. The water treatment plant in Watgunge is under progress.

However, provision of safe drinking water is a concern. To provide access to sufficient quantities of safe water, the provision of facilities for a sanitary disposal of excreta, and introducing sound hygiene behaviour are of utmost importance. The ways and means by which water is collected also has an impact on its quality. It is essential to have a clean surrounding around the source to prevent contamination. Open drains and disposal of solid waste near sources of water lead to health hazards. Thus prevention of water contamination at source is necessary to ensure the portability of supplied water. GRSE has previously provided water purifiers to local schools. It may continue this project in these areas and cover as many schools as possible.

5.6 Community Development

The roads are extremely narrow and their width cannot be increased. There are many lanes and by lanes. The area is best covered through foot as vehicles are unable to enter the interiors. Since, the construction of bridges or pathways and widening of the roads is extremely difficult, GRSE can collaborate with KMC and Port Trust authorities. It can contribute in beautification of the area – through planting trees alongside main roads; laying footpaths; building a bus stand with a shed and an architectural view; and beautification of the pond. GRSE may treat these as a last mile support.

5.7 CSR for SC/ST Community

As has already been shown in table 4 and table 13, SC/STs and OBCs constitute a very small section of the population. Scope for CSR activities could involve adoption and construction of hostels, especially for SC/ST girls.

It is important to point out here that a lot of the above mentioned activities have been carried out earlier by GRSE in different areas. In order to increase the scope of CSR, it is recommended that GRSE may move out of Kolkata and look at extremely backward regions such as Sunderbans, which could do with such support. NGOs like TERI are already involved in the development of the area. This will pave the way for a holistic approach towards CSR while ensuring longevity of a project and visibility for GRSE.

ANNEXURE I
Ward Wise School Information

A: Maheshtala Wards 1 to 10 School Information Table

Ward No	School Type	Name	Category	Teachers	Highest Class	Lowest Class	Student Strength	Medium of Instruction	Electricity in School	Common Toilet	Girls Toilet	Drinking Water Facility	Other Facilities Required
2	Private	Alampur Primary, Ward 2, Maheshtala Municipality Block, Distt. South 24 Parganas – 700024	Primary Co-ed	3	4	1	128	Bengali	No	Yes	No	Tap Water	No library, playground, computers. Limited furniture for students. Ramps for disabled children present. Scope of expansion horizontal.
2	Private	Ramdashati Subarnomoyee, Ward 2, Maheshtala Municipality Block, Distt. South 24 Parganas – 700024	Primary Co-ed	4	4	1	145	Bengali	Yes	No	Yes	Tap Water	Library, playground available. No computers, furniture for students, no ramps for disabled children. Scope of expansion available.
3	Private	Hridaynath K Bidyapith, Ward 3, Maheshtala Municipality Block, Distt. South 24 Parganas – 700024	Upper Primary with Secondary/ Higher Secondary Co-ed	11	10	5	211	Bengali	Yes	No	Yes	Tap Water	No library, playground, computers, ramps. Limited furniture for students and teachers. Scope of expansion available.
3	Private	Pallysree Banibhaban, Ward 3, Maheshtala Municipality Block, Distt. South 24 Parganas – 700024	Primary Co-ed	4	4	1	150	Bengali	Yes	NA	No	Hand pump	No computers. Limited furniture. Scope of expansion horizontal.
3	Private	Shibnagar Dasarathi, Ward 3, Maheshtala	Primary Co-ed	3	4	1	150	Bengali	Yes	Yes	NA	Hand pump	No playground or computers.

		Municipality Block, Distt. South 24 Parganas – 700024											Limited furniture. Scope of expansion available.
3	Private	Hridaynath Kayal Vidyapith Ward 3, Maheshtala Municipality Block, South 24 Parganas – 700024 #03324696952	Primary to secondary Co-ed	4	10	1	NA	Bengali	Yes	Yes	No	Others	No playground. Scope of expansion NA.
4	Private	Makalhati Primary, Ward 4, Maheshtala Municipality Block, Distt. South 24 Parganas – 700066	Primary Co- ed	4	4	1	398	Bengali	Yes	Yes	No	Others	No playground. Limited furniture. No scope of expansion.
5	Private	Kazinajrul Islam, Ward 4, Maheshtala Municipality Block, Distt. South 24 Parganas – 700066	Primary Co-ed	4	4	1	243	Bengali	Yes	Yes	No	Tap Water	No library, playground, computers, ramps, no furniture. Scope of expansion vertical.
5	Private	Panchur Primary, Ward 4, Maheshtala Municipality Block, Distt. South 24 Parganas – 700066	Primary Co- ed	5	4	1	265	Bengali	Yes	Yes	NA	Others	No playground, library, ramps, computers. Limited furniture. No scope of expansion.
5	Private	Panchur High School, Ward 4, Maheshtala Municipality Block, South 24 Parganas – 700066 # 03324913662	Upper Primary with Secondary/ Higher Secondary Co-ed	3	10	5	783	Bengali	Yes	N.A.	Yes	Tap Water	No playground, ramp, furniture. Scope of expansion NA.
6	Private	Kankhuly High School, P.S. Matiabruz, P.O. Bidhangarh, Kolkata 66	Upper Primary with secondary/ higher secondary Co-ed	NA	12	5	NA	Bengali	Yes	Yes	No	Hand pump	Limited furniture for students. Scope of expansion available.
6	Private	Kankhuli FP, Ghoshpara, Kankhuli Road, Bidhan Nagar, Kol – 66 #03324919274	Primary Co-ed	6	4	1	414	Bengali	Yes	No	NA	Tap Water	No computers, ramps. Scope of expansion vertical.

6	Govt	Kankhuli Girls High School, Bidhangarh, Kolkata – 66 #03324914804	Upper Primary with secondary/higher secondary Co-ed	24	10	5	846	Bengali	Yes	NA	NA	Others	Classrooms need repairing. No playground, computers. Limited furniture. Scope of expansion NA.
6	Private	Moonlight Nursery School (Private Unaided) Ward 6, Maheshtala Municipality Block, Distt. South 24 Parganas – 700018	Primary Co-ed	9	4	1	187	Bengali	Yes	Yes	No	None	No library, playground, computers, ramp. Scope of expansion horizontal.
6	Private	Panchur Laskarpara, Ward 6, Maheshtala Municipality Block, Distt. South 24 Parganas – 700066	Primary Co-ed	3	4	1	269	Bengali	Yes	Yes	No	Hand pump	No library and computers. Scope of expansion horizontal.
6	Private	Panchur Nurul Hoque Mali, Ward 6, Maheshtala Municipality Block, Distt. South 24 Parganas – 700066	Primary Co-ed	3	4	1	291	Bengali	Yes	Yes	NA	Well	No playground, computers, ramps. Limited furniture. No scope of expansion.
6	Private	Sahor Path Kidner Garden (Pvt. Unaided), Ward 6, Maheshtala Municipality Block, Distt. South 24 Parganas – 700018	Primary Co-ed	8	4	1	181	English	Yes	Yes	No	Tap water	No library, ramp. Scope of expansion horizontal.
6	Private	Super Perfect Day School (Pvt. Unaided), Ward 6, Maheshtala Municipality Block, Distt. South 24 Parganas – 700018	Primary Co-ed	9	4	1	133	English	Yes	No	No	None	No playground, library, computers. Limited furniture. No scope of expansion.
7	Private	Akradutta Bagan, Ward 7, Maheshtala Municipality Block, Distt. South 24 Parganas – 700018	Primary Co-ed	3	4	1	169	Bengali	Yes	NA	No	Tap water	No playground, ramp. Limited furniture. Scope of expansion not available.
7	Private	Akra S Gar R Bidyapith, Ward 7, Maheshtala Municipality Block,	Upper primary with secondary/	35	12	5	628	Bengali	Yes	Yes	No	Tap water	No playground. Scope of expansion available.

		Distt. South 24 Parganas – 700018	higher secondary Co-ed										
7	Private	All Saint High School (Pvt. Unaided), Ward 7, Maheshtala Municipality Block, Distt. South 24 Parganas – 700140	Primary with upper primary Co-ed	8	8	1	290	English	Yes	NA	NA	Tap water	No library. Scope of expansion NA.
7	Private	Nalanda (Pvt. Unaided), Ward 7, Maheshtala Municipality Block, P.O. Bidhangarh, Distt. South 24 Parganas – 700066	Primary with upper primary and secondary/higher secondary Co-ed	9	10	1	217	English	Yes	NA	Yes	Others	No ramps. Scope of expansion horizontal.
7	Private	National Public School, Ward 7, Maheshtala Municipality Block, Distt. South 24 Parganas – 700066	Primary with upper primary	10	8	1	176	Hindi English	Yes	NA	NA	Well	No library, playground, ramps, computers. Scope of expansion NA.
7	Private	New Public School (Pvt. Unaided), Ward 7, Maheshtala Municipality Block, Distt. South 24 Parganas – 700018	Primary with upper primary and secondary	9	10	1	210	Hindi English	Yes	NA	NA	Tap water	No library, playground, computers, ramps. Scope of expansion NA.
7	Private	Pira Dolly (Private unaided), Ward 7, Maheshtala Municipality Block, Distt. South 24 Parganas – 700018	Primary Co-ed	10	4	1	188	Bengali English	Yes	Yes	Yes	Tap water	No library, computers, ramps. Scope of expansion available.
7	Govt	Rabindra B Bidyapith UP, Ward 7, Maheshtala Municipality Block, Distt. South 24 Parganas – 700018	Upper primary with secondary/higher secondary Girls	13	10	5	606	Bengali	Yes	NA	NA	Tap water	No playground, no ramps. Limited furniture. Scope of expansion available.
7	Private	Rabindra Vidyapith FP, Ward 7, Maheshtala Municipality Block, Distt. South 24 Parganas – 700018	Primary Co-ed	4	4	1	177	Bengali	Yes	Yes	NA	Tap water	Limited furniture. No scope of expansion.
7	Private	Silverline Day School (Pvt. Unaided), Ward	Primary with upper	6	8	1	100	English	Yes	Yes	No	Others	No library, ramp. Scope of

		7, Maheshtala Municipality Block, Distt. South 24 Parganas – 700018	primary Co-ed										expansion available.
7	Private	Sister Nibedita (Pvt. Unaided), Ward 7, Maheshtala Municipality Block, Distt. South 24 Parganas – 700018	Primary Co-ed	10	4	1	179	English Bengali	Yes	Yes	NA	Tap water	No library, computers, ramp. Scope of expansion NA.
8	Private	Dakshin Kankhuli FP, Ward 8, Maheshtala Municipality Block, Distt. South 24 Parganas -700066	Primary Co-ed	3	4	1	374	Bengali	No	Yes	NA	Hand pump	No library, playground, computers, ramps. Limited furniture. Scope of expansion vertical.
8	Private	Kankhuli Purbapara JB, Ward 8, Maheshtala Municipality Block, Distt. South 24 Parganas – 700066	Primary Co-ed	5	4	1	248	Bengali	No	Yes	Yes	Hand pump	No library, computers, furniture for students. Scope of expansion available.
8	Private	Kishalaya Loharpole (Pvt. Unaided), Ward 8, Maheshtala Municipality Block, Distt. South 24 Parganas – 700066	PrimaryCo-ed	8	4	1	71	Bengali Hindi	Yes	Yes	Yes	Tap water	No library, ramp. Scope of expansion available.
8	Private	Satghara JB, Ward 8, Maheshtala Municipality Block, Distt. South 24 Parganas – 700066	Primary Co-ed	6	5	1	512	Bengali	Yes	Yes	NA	Tap water	No playground, computers, furniture for students. Scope of expansion available.
9	Private	Ghar Bharati Kindergarden (Pvt. Unaided), Ward 9, Maheshtala Municipality Block, Distt. South 24 Parganas – 700066	Primary Co-ed	8	4	1	96	Bengali Hindi	Yes	Yes	Yes	Tap water	No playground, library, computers, ramp. Scope of expansion available.
9	Private	Hashi Khushi (Pvt. Unaided), Ward 9, Maheshtala Municipality Block, Distt. South 24 Parganas – 700066	Primary Co-ed	6	4	1	63	Bengali	Yes	Yes	NA	Tap water	No playground, library, computers, ramp. Scope of expansion NA.
9	Private	Kachi Kacha	Primary	7	4	1	352	Bengali	Yes	Yes	Yes	Well	No library,

[illegible]

		Municipality Block, Distt. South 24 Parganas – 700066	Girls										
10	Private	Abul Hasan Memorial FP, Ward 10, Maheshtala Municipality Block, Distt. South 24 Parganas – 700066	Primary Co-ed	3	4	1	110	Bengali	Yes	NA	Yes	Hand pump	No library, furniture for students. Scope of expansion available.
10	Private	Arunodaya (Pvt. Unaided), Ward 10, Maheshtala Municipality Block, Distt. South 24 Parganas – 700140	Primary Co-ed	4	4	1	47	Bengali	Yes	NA	Yes	Hand pump	No library, playground, computers, ramps. Limited furniture. Scope of expansion NA.
10	Private	Kalinagar Labanya FP, Ward 10, Maheshtala Municipality Block, Distt. South 24 Parganas – 700066	Primary Co-ed	3	4	1	159	Bengali	Yes	Yes	Yes	Hand pump	No library, playground, computers. Scope of expansion horizontal.
10	Private	Kalyan Siksha Niketan, Ward 10, Maheshtala Municipality Block, Distt. South 24 Parganas – 700066	Primary Co-ed	10	4	1	43	Bengali	Yes	Yes	Yes	Well	No playground, library, computers, ramp. Limited furniture. Scope of expansion NA.
10	Private	Little Star (Pvt. Unaided), Ward 10, Maheshtala Municipality Block, Distt. South 24 Parganas – 700066	Primary Co-ed	6	4	1	122	Bengali	No	Yes	Yes	Well	No library, computer, ramp. Scope of expansion available.
10	Private	Puranchandra Paharpur FP, Ward 10, Maheshtala Municipality Block, Distt. South 24 Parganas – 700066	Primary Co-ed	3	4	1	195	Bengali	Yes	Yes	Yes	Hand pump	No library, playground, computers, ramp, furniture for students. Scope of expansion available.

*All schools are managed by Department of Education, GoWB unless mentioned otherwise.

B: KMC Wards 76 to 80 School Information Table

Ward No	School Type	Name of School	Category	No. of Teachers	Highest Class	Lowest Class	Student Strength	Medium of Instruction	Electricity in School	Common Toilet	Girls Toilet	Drinking Water Facility	Other Facilities Required
76	Private	Bankim Ghosh Mem. Girl HS Pry S, 20, Mohan Chand Road, Kidderpore, Kolkata – 23 #03324597771	Primary Co-ed	4	4	1	97	Bengali	Yes	Yes	Yes	Tap water	No playground, ramps. No scope for expansion.
76	Govt.	Bankim Ghosh Mem. Girls HS, 20, Mohan Chand Road, Kidderpore, Kolkata – 23 #03324597771	Upper primary with secondary/ HS Girls	26	12	5	1200	Bengali Hindi	Yes	NA	NA	Hand pump	No playground. Limited furniture. Scope of expansion vertical and horizontal.
76	Private	Child Care Pry School (Pvt. Unaided), 42A, Ram Kamal St, Kolkata – 23	Primary Co-ed	5	4	1	27	English	Yes	NA	Yes	Tap water	No library, playground, computers, ramp. No scope for expansion.
76	Private	Gilbert's Memorial School (Pvt. Unaided), 26, Michael Dutta Street, Kidderpore, Kolkata – 23	Primary Co-ed	10	5	1	145	English	Yes	Yes	NA	Tap water	No ramp, library. Scope of expansion NA.
76	Private	Kabitirtha High School (Pvt. Unaided), Kidderpore, Kolkata – 23	Upper primary Co-ed	4	8	5	120	Hindi	Yes	NA	Yes	Tap water	No computers, playground, ramp. Scope for expansion NA.
76	Private	Kabitirtha Vidyalaya (Morning), 26/1, Jay Krishna Paul, Kol – 23	Primary Co-ed	4	4	1	113	Hindi	Yes	No	NA	Tap water	No playground, ramps, computers. No scope for expansion.
76	Private	Kidderpore Abaitanik Pry. School, Kolkata - 23	Primary Co-ed	3	4	1	48	Bengali	Yes	Yes	NA	Others	No library, playground, computer, ramp. Limited furniture. No scope of expansion.
76	Private	Kidderpore Banga Vidyalaya, 44, Ram Kamal St, Kolkata – 23	Primary Co-ed	3	4	1	63	Bengali	Yes	NA	No	Tap water	No playground, no ramp, computer. No scope of expansion.
76	Municipal School	K.M.C.P. 16 Mohan Chand Rd., Kolkata –	Primary Co-ed	2	4	1	48	Bengali	Yes	Yes	NA	Tap water	No ramp, library,

		23											furniture. No scope of expansion.
76	Municipal School	K.M.C.P. 16 Mohan Chand Rd. , Kolkata – 23	Primary Co-ed	3	5	1	56	Bengali	Yes	Yes	Yes	Tap water	No library, computer, ramps. Scope of expansion horizontal.
76	Municipal School	K.M.C.P. 16 Mohan Chand Rd., Kolkata – 23	Primary Co-ed	4	5	1	65	Urdu	Yes	Yes	Yes	Tap water	No library, computers, ramps. Scope of expansion vertical.
76	Municipal School	K.M.C.P. 16 Mohan Chand Rd. , Kolkata – 23	Primary Co-ed	3	5	1	93	Urdu	Yes	Yes	Yes	Tap water	No playground, ramps, computers. No scope of expansion.
76	Private	Lajpat Institution (Pvt. Unaided), 9A, Ramanath Pal Road, Kidderpore, Kolkata – 23	Primary with upper primary, secondary and HS	10	10	1	677	English	Yes	Yes	Yes	Tap water	NA
76	Private	Mala Viya Vidyalaya, 16 Hem Chandra Street, Kolkata – 23	Primary Co-ed	6	5	1	171	Hindi	Yes	Yes	NA	Tap water	No playground, ramp, computer. No scope of expansion.
76	Private	Md. Ali Jawhar S.S.K., 16, Mohan Chand Road, Kolkata – 23	Primary Co-ed	2	4	1	52	Urdu	Yes	Yes	NA	Well	No playground, library, ramps, computers. Scope of expansion NA.
76	Private	Ram Kamal St. UP School, 26A, Ram Kamal St. Kolkata – 23	Primary Co-ed	2	4	1	18	Bengali	Yes	Yes	NA	Tap water	NA
76	Govt.	Sarat Chandra Paul Girls HS, 43 A, Ram Kamal St., Kidderpore, Kol – 23 #03324593144/6333	Upper primary with secondary and HS Girls	NA	12	5	716	Bengali	Yes	No	NA	Tap water	Classrooms need repair. Furniture limited.
76	Govt.	Sarat Ch. Paul Girls Pry School, 43 A, Ram Kamal St., Kidderpore, Kol – 23	Primary Girls	6	4	1	52	Bengali	Yes	NA	Yes	Tap water	NA
76	Private	Shaheed Aurangzeb Memorial (Pvt. Unaided),	Primary with upper primary and	2	10	1	80	English	Yes	Yes	NA	Tap water	NA

		Kidderpore, Kolkata - 23	secondary										
76	Govt.	The Academy Transition (Pvt. Unaided)	Primary Boys	6	4	1	127	Bengali	Yes	NA	NA	Others	NA
76	Private	The Kidderpore Academy, 35, Ram Kamal St., Kidderpore, Kolkata - 23 #03324596297	Primary to HS Boys	NA	12	1	400	Bengali	NA	NA	NA	NA	NA
77	Private	Al Hamid Great Hall W.S.A. School (Pvt. Unaided), Kolkata - 23	Primary Co-ed	7	5	1	48	English	Yes	Yes	Yes	Tap water	NA
77	Private	Azad Prathamik Vidya Niketan, 18/1, M.M. Ali Road, Kolkata - 23	Primary Co-ed	6	4	1	122	Bengali	Yes	No	NA	Tap water	No ramp, playground, computers. Scope of expansion horizontal.
77	Private	Balika Vidyanatan, 17/2, Manastala Lane, Kolkata - 23	Primary Co-ed	4	4	1	140	Bengali	Yes	Yes	No	Tap water	NA
77	Private	Bhukailash Prathamik Sikshayatan, 3/1/1A, Bhu Kailash Road, Kolkata - 23	Primary Co-ed	2	4	1	74	Bengali	Yes	No	NA	Others	No playground, computers, ramps. No scope of expansion.
77	Govt (managed by madrassa board)	Hazi Md. Moshin Girls High Madrassa, 12, Manastala Row, Kolkata - 23	Upper primary with secondary Girls	NA	10	5	208	Bengali	Yes	No	NA	Tap water	No playground, ramps. No scope for expansion.
77	Private	Kazi Nazrul Islam Pry, 4/1, Ibrahim Road, Kolkata - 23	Primary Co-ed	2	4	1	72	Bengali	Yes	Yes	Yes	Tap water	NA
77	Govt.	Kiddepore Balika Vidyalaya, 17/2, Manastala Lane, Kolkata - 23	Upper primary with secondary Girls	14	10	5	412	Bengali	Yes	NA	No	Tap water	No playground, ramps. Limited furniture. No scope for expansion.
77	Govt.	Kidderpore Urdu Girls Primary School, 47A, Dr. Sudhir Basu Road, Kolkata - 23	Primary Girls	4	4	1	112	Urdu	Yes	NA	No	Tap water	No library, playground, ramps, computers. No scope for expansion.
77	Govt.	Kidderpore Urdu	Primary	3	4	1	66	Urdu	No	Yes	NA	Tap water	NA

		School, 14, M.M. Ali Road, Kolkata – 23	Boys										
77	Municipal Body	K.M.C.P. 17/1 Manastala Lane (D), Kolkata – 23	Primary Co-ed	4	5	1	51	Bengali	Yes	Yes	Yes	Others	No library, playground, computers, ramps. Scope of expansion vertical.
77	Municipal Body	K.M.C.P. 17/1 Manastala Lane (M), Kolkata - 23	Primary Co-ed	2	5	1	32	Bengali	Yes	Yes	Yes	Tap water	No ramps, playground, library, computers and furniture for teachers. Scope of expansion vertical.
77	Municipal Body	K.M.C.P. 19/1 Manastala Lane, Kolkata – 23	Primary Co-ed	2	5	1	NA	Bengali	No	Yes	NA	others	No library, playground, ramps. No scope of expansion.
77	Municipal Body	K.M.C.P. 39/1 Manastala Lane (D), Kolkata – 23	Primary Co-ed	2	5	1	132	Hindi	Yes	Yes	Yes	Tap water	No playground, ramps. Limited furniture. Scope of expansion vertical & horizontal.
77	Municipal Body	K.M.C.P. 39/1 Manastala Lane (M), Kolkata - 23	Primary Co-ed	4	4	1	63	Bengali	Yes	No	Yes	Tap water	NA
77	Municipal Body	K.M.C.P. ,84, Dr. Sudhir Bose Road, Kolkata – 23	Primary Co-ed	2	5	1	186	Urdu	Yes	No	NA	Tap water	No furniture. No scope of expansion.
77	Govt.	Lajpat Balika Vidyalaya, 24/1/1, Manastala Lane, Kolkata – 23	Upper primary with HS Girls	NA	12	5	714	Hindi	Yes	Yes	NA	Tap water	No library, playground, ramps. Scope of expansion NA.
77	Govt.	Lajpat Hindi HS, 24/1/1, Manastala Lane, Kolkata - 23	Upper primary with HS Boys	18	12	5	1247	Hindi	Yes	NA	NA	Tap water	NA
77	Private	Lajpat Hindi Pry, 24/1/1, Manastala Lane, Kolkata - 23	Primary Co-ed	10	4	1	714	Hindi	Yes	NA	Yes	Tap water	No ramps. Limited furniture. No scope for expansion.
77	Private	Lajpat Institution (B.M.), 54, Dr. Sudhir Bose Road, Kolkata – 23	Primary Co-ed	3	5	1	60	Bengali	Yes	No	Yes	Tap water	No playground, computers, ramps. No scope for expansion.

77	Private	Lajpat Shiksha Sadan, 24/1/1, Manastala Lane, Kolkata - 23	Primary Co-ed	3	4	1	77	Hindi	Yes	Yes	Yes	Tap water	NA
77	NA	Maulana Md. Ali High Madrassa #03324449488, 47A, Dr. Sudhir Basu Road, Kolkata - 23	Primary to secondary Boys	NA	10	1	342	NA	NA	NA	NA	NA	NA
77	NA	St. Barnabas HS #03324595579, 21, Dent Mission Road, Kolkata - 23	Primary to HS Boys	NA	12	1	413	NA	NA	NA	NA	NA	NA
77	NA	St. Pauls Boarding and Day School #03324497185	Primary to HS Girls	NA	12	1	NA	NA	NA	NA	NA	NA	NA
77	NA	St. Teresa's Secondary School #03324497216, 72, Diamond Harbour Road, Kidderpore, Kolkata - 23	Primary to HS Girls	NA	12	1	200	NA	NA	NA	NA	NA	NA
78	Private	Adarsha Hindi Girls School, 2 Mominpore Road, Kolkata - 23	Primary Girls	4	4	1	182	Hindi	Yes	NA	NA	Tap water	No library, ramp, computers. No scope for expansion.
78	Govt.	Adarsha Hindi High School, 2, Mominpore Road, Kolkata - 23.	Primary Boys	8	4	1	379	Hindi	Yes	Yes	NA	Tap water	No playground, ramp, computer. Scope of expansion horizontal.
78	Govt.	Allama Md. Iqbal Girls Secondary School, Kolkata - 27	Upper primary Girls	7	8	5	44	Urdu	Yes	NA	No	Tap water	No library, playground, ramps. Scope of expansion available.
78	Private	Allama Md. Iqbal Primary School, Diamond Harbour Road, Kolkata - 27	Primary Co-ed	6	4	1	200	Urdu	Yes	NA	No	Tap water	No library, playground, ramp. Scope of expansion available.
78	Govt.	Badshah Khan Centenary Girls HS #03324496406, 3, Nawab Ali Lane, Kolkata - 23	Upper primary to secondary Girls	7	12	5	117	Urdu	Yes	NA	NA	Tap water	No library, playground, ramps. No scope of expansion.
78	Private	Child's World School (Pvt. Unaided),	Primary Co-ed	7	5	1	23	English	Yes	Yes	Yes	Tap water	No ramp, playground,

		Diamond Harbour Road, Kolkata – 27											computers. No scope of expansion.
78	Private	Evergreen HS (Pvt. Unaided)	Primary with upper primary Co-ed	3	7	1	NA	English	Yes	NA	Yes	Tap water	No playground, library, ramps. Limited furniture. No scope of expansion.
78	Private	Grace International School (Pvt. Unaided), Diamond Harbour Road, Kolkata – 27	Primary to secondary Co-ed	6	9	1	103	English	Yes	NA	Yes	Tap water	NA
78	Private	Harijan Jnana Prakash Vidyalaya, 12/1, Mayur Bhanj Road, Kolkata - 23	Primary Co-ed	4	4	1	153	Hindi	Yes	Yes	NA	Tap water	No playground, computers, ramps. Scope of expansion vertical.
78	Govt.	Jawaharlal Nehru Balika Vidyapith HS #03324495721, 5/2, Bhu Kailash Road, Kolkata – 23	Upper Primary to secondary Girls	6	10	5	290	Hindi	Yes	No	NA	Tap water	No playground, ramps. Scope of expansion available.
78	Govt.	Jawaharlal Nehru Balika Vidyapith, 5/2, Bhu Kailash Road, Kolkata - 23	Primary Girls	4	4	1	306	Hindi	Yes	NA	NA	Tap water	No playground, ramps. Scope of expansion available.
78	Govt.	Jawaharlal Nehru Boys Vidyapith HS #0332449572, 5/2, Bhu Kailash Road, Kolkata – 23	Primary to secondary Boys	6	10	5	296	Hindi	Yes	No	NA	Tap water	No playground, ramps. Classrooms need repair. Scope of expansion available.
78	Govt.	Jawaharlal Nehru Boys Vidyapith, 5/2, Bhu Kailash Road, Kolkata - 23	Primary Boys	6	4	1	248	Hindi	Yes	Yes	NA	Tap water	No playground, ramp. Scope of expansion available.
78	Private	Joseph Day School (Pvt. Unaided), Dr. Lal Mohan Bhattacharya Road, Kolkata – 27	Primary with upper primary Co-ed	7	8	1	96	English	Yes	Yes	Yes	Tap water	NA
78	Govt.	Kendriya Vidyalaya, Near Command Hospital, Alipore, Kolkata – 27	Primary to High Secondary	13	12	1	1397	English	Yes	NA	Yes (only for Higher secondary)	Tap water	NA

78	Private	Kidderpore Child's World (Pvt. Unaided)	Primary Co-ed	12	5	1	NA	English	Yes	NA	Yes	Tap water	NA
78	Govt.	Kidderpore Adarsha Hindi School, 2 Mominpore Road, Kolkata - 23	Upper primary to higher secondary Boys	10	11	5	510	Hindi	Yes	NA	No	Tap water	No ramps. Classrooms need repair. Scope of expansion horizontal.
78	Govt.	Kidderpore Milani Girls High School 8/1, Braunfield Row, Kolkata - 27 #03324496375	Upper primary to secondary Girls	6	10	5	178	Bengali	Yes	NA	Yes	Hand pump	No playground, ramp, computers. Scope of expansion vertical.
78	Govt.	Kidderpore Milani High School, 8/1, Braunfield Row, Kolkata - 27 #03324496375	Upper primary to secondary Boys	6	10	5	193	Bengali	Yes	No	NA	Hand pump	No library, playground, ramps, computers. No scope of expansion.
78	Private	Kidderpore Milani Primary School, 8/1, Braunfield Row, Kolkata - 27	Primary Co-ed	7	4	1	202	Bengali	Yes	Yes	NA	Hand pump	No playground, ramps, computers. Scope of expansion vertical.
78	Govt.	Kidderpore Muslim High School #0332497009, 3, Nawab Ali Lane, Kolkata - 23	Upper primary to secondary Boys	NA	12	NA	1000	NA	NA	NA	NA	NA	NA
78	Private	Loyola High School, 54/3, D.H. Road, Kolkata - 27	Boys	NA	12	NA	464	NA	NA	NA	NA	NA	NA
78	Municipal School	KMCP (M), 12A, Ibrahim Road, Kolkata - 27	Primary	NA		1	107	Urdu	NA	NA	NA	Tap water	NA
78	Municipal School	KMCP (D), 12/1, Mayur Bhanj Road, Kolkata - 27	Primary	NA		1	68	Hindi	NA	NA	NA	Tap water	NA
78	Municipal School	KMCP (M), 52, Braunfield Road, Kolkata - 27	Primary	NA		1	39	Bengali	NA	NA	NA	Tap water	NA
78	Municipal School	KMCP (D), 52, Braunfield Road, Kolkata - 27	Primary	NA		1	77	Bengali	NA	NA	NA	Tap water	NA
78	Municipal School	KMCP (D), 21B, Mominpore Road, Kolkata - 27	Primary	NA		1	144	Bengali	NA	NA	NA	Tap water	NA

78	Municipal School	KMCP (D), 12A, Ibrahim Road, Kolkata - 27	Primary	NA		1	94	Bengali	NA	NA	NA	Tap water	NA
79	Private	C.P.C. Remount Road Institution, 16D, Remount Road, Kolkata - 23	Upper primary with secondary Co-ed	6	10	5	85	Bengali	Yes	Yes	Yes	Tap water	No ramps. Limited furniture. Scope of expansion available.
79	Private	C.P.C Remount Road Institution, 16D, Remount Road, Kolkata - 23	Primary Co-ed	4	4	1	87	Bengali	Yes	Yes	Yes	Tap water	NA
79	Govt.	Gauhar Shami Educational Institute, 71/1/C, Diamond Harbour Road, Kidderpore, Kolkata - 23	Upper primary with secondary Co-ed	4	10	5	115	Urdu	Yes	Yes	Yes	Tap water	No library, playground, ramps, computers. Scope of expansion vertical.
79	Private	Harijan Sewak Vidyalaya, C.P.T Lines, 5, Bhu Kailash Road, Kolkata - 23	Primary Co-ed	6	4	1	125	Hindi	Yes	Yes	Yes	Tap water	No playground, computers, ramps. Scope of expansion vertical.
79	Private	Hossain Shah Girls High School, 15B, Hossain Shah Road, Mominpore, Kolkata - 23	Primary with upper primary Co-ed	8	8	1	91	Urdu	Yes	Yes	Yes	Tap water	No library, playground, ramps, computers. Scope of expansion available.
79	Private	Hossain Shah Memorial Urdu G.S.F.P., 3C, Ismail Ostagar Lane, Kolkata - 27	Primary Co-ed	2	4	1	42	Urdu	Yes	Yes	NA	Tap water	No library, playground, ramps, computers. No scope of expansion.
79	Private	Jnan Bhaskar Happy Home	Primary with upper primary Co-ed	7	8	1	NA	Hindi English	Yes	Yes	Yes	Tap water	No library, playground, ramps, computers. Limited furniture. No scope of expansion.
79	Private	Kidderpore Urdu School Kobikhet, 13, Braunfield Row, Kolkata - 23	Primary Co-ed	NA	4	1	6	Urdu	Yes	Yes	NA	Others	No library, playground, ramps. No scope for

													expansion.
79	Municipal Body	KMCP (D), 11, Goragachard, Kolkata -53	Primary Co-ed	2	5	1	149	Hindi	Yes	Yes	Yes	Tap water	No library, playground. Scope of expansion horizontal.
79	Municipal Body	KMCP(D), 15 Devi Choudhury Rd., Kolkata - 23	Primary Co-ed	2	4	1	117	Hindi	Yes	Yes	Yes	Tap water	No library, playground, computers, ramps. Classrooms need repair. Limited furniture. Scope of expansion available.
79	Municipal Body	KMCP (M), 15, Devi Choudhury Rd., Kolkata - 23	Primary Co-ed	2	4	1	56	Bengali	Yes	NA	NA	Tap water	No library, playground, computers, ramps. Classrooms need repair. Limited furniture. Scope of expansion vertical.
79	Private	Lal Bahadur Shastri Vidyapith, 49/5/H/189, Karl Marx Sarani, Kolkata - 23	Primary Co-ed	3	4	1	131	Hindi	Yes	Yes	Yes	Tap water	No playground, ramps. No scope of expansion.
79	Private	Maulana Azad Urdu School, Kanta Pukur Driver Quarter, Kolkata - 23	Primary Co-ed	3	5	1	120	Urdu	Yes	Yes	Yes	Tap water	No library, playground, computers, ramps. Limited furniture. Scope of expansion horizontal.
79	Private	Nivatia Vidyamndir Junior High School, 49/5, C.G.R. Road, Kolkata - 23	Primary with upper primary Co-ed	7	8	1	128	English	Yes	Yes	Yes	Hand pump	No playground, ramps. Scope of expansion available.
79	Private	Pandit Jawaharlal Nehru Bal Shiksha Sadan, K.P.T Line, 36, Hide Road, Kolkata - 23	Primary Co-ed	4	4	1	30 boys 18 girls	Hindi	No	Yes	NA	Others	No playground, ramp. No scope of expansion. Limited furniture.
79	Private	Prajapati Vidya mandir, 49/5, C.G.R.	Primary Co-ed	5	4	1	149	Hindi	Yes	Yes	No	Tap water	No library, playground,

		Road, Phoolbagan, Kolkata - 23											ramp. No scope of expansion.
79	Private	Ram Narayan Shiksha Niketan, 48B, C.G.R. Road, Phoolbagan, Kolkata - 23	Primary Co-ed	3	4	1	128	Hindi	Yes	Yes	Yes	Well	No playground, ramps. No scope of expansion.
79	Private	Shramik Vidyalaya, Coal Berth, Kolkata - 23	Primary Co-ed	4	5	1	163	Hindi	Yes	Yes	Yes	Tap water	No playground, computers, ramps. Limited furniture. Scope of expansion vertical.
79	Private	Shree Kishore Vidyalaya, 20, Coal Berth, Kolkata - 23	Primary Co-ed	4	4	1	189	Hindi	Yes	NA	No	Tap water	No playground, ramps, computers. No scope of expansion.
79	Private	Shri Bhukailash Vidyalaya (Pvt. Unaided), 52, Bhukailash Road, Ekbalpur, Kolkata - 23	Primary Co-ed	3	5	1	110	Hindi	Yes	Yes	Yes	Tap water	No library, playground, ramps, computers. Limited furniture. No scope of expansion.
79	NA	Shri Jnan Bhaskar Vidyalaya, 11, Dock Estate Boundary Road, East Guard, Kolkata - 23	Upper Primary Boys	NA	10	5	344	NA	NA	NA	NA	NA	NA
80	Govt.	Alipore Takshal Vidyapith for Girls, Govt. Mint Colony, PO New Alipore, PS Taratala, Kolkata - 53 #03324014559	Upper primary with secondary Girls	NA	10	5	NA	Hindi	Yes	NA	NA	Tap water	No library, computers, ramps. Scope of expansion available.
80	Govt.	Alipore Takshal Vidyapith High School, Govt. Mint Colony, PO New Alipore, PS Taratala, Kolkata - 53 #03324014559	Upper primary to higher secondary Boys	NA	12	5	NA	Hindi	Yes	NA	NA	Tap water	NA
80	Govt.	Arya Parishad Balika Vidyalaya, 1, Niamak Mahal Road, Kolkata - 44	Upper primary to secondary Girls	4	10	5	178	Hindi	Yes	NA	NA	Tap water	No library, computers, ramps. No scope of expansion.
80	Govt.	Arya Parishad	Primary	4	4	1	96	Hindi	Yes	Yes	Yes	Tap water	NA

		Vidyalaya High School, 1, Nimak Mahal Road, Kolkata - 43 #03324396314	Co-ed										
80	Private	Arya Vidyalaya, 1H, Mohan Ghosh Road, Kolkata - 24	Primary Co-ed	2	4	1	112	Hindi	Yes	NA	Yes	Tap water	No playground, ramp, computers. Limited furniture. Scope of expansion horizontal.
80	Private	Gandhi Centenary Memorial Junior High School, Kolkata - 43	Primary with upper primary Co-ed	4	8	1	80	Hindi	Yes	Yes	Yes	Tap water	No library, ramps, computers. Limited furniture. Classrooms need repair. Scope of expansion horizontal.
80	Private	Gandhi Centenary Memorial Primary School (Pvt. Unaided), Kolkata - 43	Primary Co-ed	3	4	1	182	Hindi	Yes	Yes	Yes	Tap water	No library, playground, ramps, computers. Scope of expansion NA.
80	Private	Gandhi Vidyalaya, G.C.D. Sick Lane, Kolkata - 43	Primary Co-ed	3	4	1	310	Hindi	No	Yes	Yes	Others	No playground, ramps. Scope of expansion vertical.
80	Private	Harijan Gyan Mandir, Behind Taratalla Maidan, Kolkata - 88	Primary Co-ed	6	4	1	252	Hindi	Yes	NA	NA	Tap water	No playground, ramps, computers. Scope of expansion vertical.
80	Govt.	Kendriya Vidyalaya, Garden Reach, Kolkata - 23	Primary to higher secondary Co-ed	4	12	1	952	English	Yes	No	NA	Tap water	NA
80	Private	Kidderpore Oriya High School, 1, Satya Doctor Road, Kolkata - 23 #03334593447	Upper primary to secondary Co-ed	6	10	5	206	Oriya	Yes	Yes	Yes	Tap water	No playground, ramps. Limited furniture. Scope of expansion vertical.
80	Private	Kidderpore Oriya School, 1, Satya	Primary Co-ed	2	4	1	91	Oriya	Yes	Yes	Yes	Tap water	No playground, library, ramps,

		Doctor Road, Kolkata - 23											computers. Scope of expansion horizontal.
80	Municipal	K.M.C. Staff Colony Taratala (D), Kolkata - 88	Primary Co-ed	2	4	1	31	Bengali	Yes	Yes	NA	Tap water	No computers, ramps. Scope of expansion vertical.
80	Municipal	KMCP, Staff Colony Taratala (M), Kolkata - 88	Primary Co-ed	2	4	1	81	Hindi	Yes	Yes	No	Tap water	No library, ramps. No scope of expansion.
80	Private	Mochikhola Hindi Free UP School, 77, Garden Reach Road, Kolkata - 23	Primary Co-ed	2	4	1	180	Hindi	No	Yes	NA	Others	No library, playground, ramps. Limited furniture. Scope of expansion horizontal.
80	Private	Nibedita S.S.K., Taratala Staff Colony, Kolkata - 88	Primary Co-ed	2	4	1	73	Bengali	Yes	Yes	NA	Well	No ramps, computers. Scope of expansion NA.
80	Private	Sanghamitra Vidyalaya, S.E. Railway Colony, Kolkata - 43 #03324397665	Primary Co-ed	13	4	1	500	Bengali	Yes	NA	Yes	Tap water	No ramps, computers. Scope of expansion horizontal.
80	Private	Sanghamitra Vidyalaya High School, S.E. Railway Colony, Kolkata - 43	Upper primary with higher secondary	18	12	5	1274	Bengali Hindi	Yes	NA	NA	Tap water	Limited furniture. Classrooms need repair. Scope of expansion horizontal.
80	Private	Sarada S.S.K., C.P.T. Colony, Kolkata - 88	Primary Co-ed	2	4	1	52	Bengali	Yes	Yes	NA	Tap water	No playground, library, ramps. Scope of expansion NA.
80	NA	Shri Shanti Niketan Vidyalaya High School, 1 Garden Reach Road, Kolkata - 23 #03324892572	Upper primary to secondary Boys	NA	10	1	220	NA	NA	NA	NA	NA	NA

*All schools are managed by Department of Education, GoWB, unless otherwise mentioned.

** (M) – Morning School/ (D) – Day School

*** NA – Not Available

Annexure II
Registered Health Institutions as per Department of Health & Family Welfare, Govt. of West Bengal

Maheshtala Municipality Wards 1 to 10							
S. No.	Name of Hospital	Ward No.	Type	Location/Contact Details	No. of Beds	Contact Number	Other Facilities
1.	Santoshpur Nursing Home	5	Private	Bidhangarh, Kolkata – 66	20	03324914733	Specializes in oncology. Also provides licensed vocational nursing.
2.	Dr. Roychoudhury S Nursing Home	3	Private	240, Diamond Harbour Road (Near Behala Thana), Parnasree Pally, Kolkata – 66	NA	03323991199	General Hospital.
3.	Sishu Hospital	4	Private	Railway Line Road, Makalhati Mauza, Kolkata - 66	30	NA	Children Hospital.
4.	Rotary Eye Hospital	7	Private	SA Farooque Road, Rabindra Nagar, Panchur Mauza, Kolkata - 18	NA	NA	NA
KMC Wards 76 – 80							
1.	Alipore Central Jail Hospital	78	State Govt.	Alipore, Kolkata - 27	120	03324791053	Only for jail inmates and their families.
2.	Alipore Special Jail Hospital	78	State Govt.	Alipore, Kolkata - 27	280	03324791292	Only for jail inmates and their families.
3.	Alipore Police Hospital	79	State Govt.	Alipore, Kolkata - 27	18	03322477904	Only for jail inmates and their families.
4.	Calcutta Port Trust (Centenary) Hospital	80	Calcutta Port Trust	Diamond Harbour Road, Majerhat, Kolkata - 53	160	03324784577	
5.	Kidderpore Maternity Home	76	KMC	35/1, Ekbalpur Road, Kolkata - 23	40	03324493560	Maternity Home.
6.	Presidency Jail Hospital	78	State Govt.	Alipore, Kolkata - 27	170	03324791854	Only for jail inmates and their families.
7.	South Eastern Railway Hospital	80	Railways	11, Garden Reach Road, Kolkata - 43	323	03324783042	Multi-specialty tertiary care hospital.
8.	Bam India Matri Sadan	80	NGO	P4/1, Garden Reach Road, Kolkata - 24	8	03324694772	Promotion of safe motherhood and family welfare services.
9.	Bharuka Health Centre	80	Private	P34/4, Garden Reach Road, Kolkata – 43	NA	03324391679	Reproductive child health, awareness & services regarding HIV/AIDS to sex workers, migrant labourers, OPD, Counseling
10.	Bam India	80	NGO	J483, Paharpur Road, Kolkata - 24	NA	03324692159	Promotion of safe motherhood and family welfare services.
11.	Calcutta Medical Research Institute	79	Private	7/2, Diamond Harbour Road, Kolkata – 27	400	03324567700	
12.	S.E. Railways Garden Reach	80	Railways	Garden Reach, Kolkata - 43	305	03324504072	Multi-specialty tertiary care hospital.
13.	Ekbalpur Nursing Home	76	Private	9, Ibrahim Road, Kolkata - 23	71	03324494514/5151	

14.	Braodway Nursing Home	80	Private	198/A, New Alipore, Kolkata - 53	NA	03324782654	Specializing in gynaecology.
-----	-----------------------	----	---------	----------------------------------	----	-------------	------------------------------

ANNEXURE III

Disability Data

List of Special Schools for disabled children in Kolkata			
No.	Name & Address	Intake Capacity	Features
1	Calcutta Deaf & Dumb School, 293, A.P.C. Road, Kolkata 700009 Ph. No. 2350-1058, 2350-1326	516	For the Hearing Handicapped, Govt. sponsored
2	Ideal School for the Deaf, 125, A.J.C. Bose Road, Kolkata 700014 Ph. No. 2227-7971	70	For the Hearing Impaired, Govt. sponsored
3	Parents' Own Clinic for Deaf Children, 16/A.D.L. Roy Street, Kolkata 700005 Ph. No. 2359-9840	60	For the Hearing Impaired, Accorded academic recognition
4	Speech and Hearing Institute Research Centre, 10, Mandeville Garden, Kolkata 700019	166	For the Hearing Impaired, Accorded academic recognition
5	Light House for the Blind, 174, Shyamaprasad Mukherjee Rd. Kolkata 700020 Ph. No. 2466-4227	170	Govt. sponsored, School for the Blind
6	Calcutta Blind School, Vocational Training Centre For the Sightless Women, Diamond Harbour Road, Kolkata 700032 Ph. No. 2468-1335, 2446-5522.	200	For the Blind, Govt. sponsored.
7	Bodhi Peet, 20, Harinath De Road, Kolkata 700009	65	For the mentally retarded, Govt. sponsored
8	Asutosh Institution, 14, Rahim Ostagar Road, Kolkata 700045, Ph. No. 2473-1911	75	For the mentally retarded, Govt. Sponsored
9	Rehabilitation Centre for Children, 59, Matilal Gupta Road, Barisha, Kolkata 700008 Ph. No. 2494-6986/2494-6978	75	For the mentally retarded, Gets govt. grant.
10	Oral School for the Deaf, 48, Short Street, Kolkata 700016 Ph. No. 2240-2427	28	For the Hearing Impaired, Gets govt. grant.
11	Voice of the World, 3, Chhidam Mudi Lane, Kolkata 700006	60	For the Blind, gets govt. maintenance grant.
12	Institute of Educational and Psychological Research, 114A, Prince Anwar Shah Road, Kolkata 700045	45	For the mentally retarded, gets govt. grant
13	Green Fields, 33, Santoshpur Avenue, Kolkata 700075	100	For the mentally retarded, gets govt. grant
14	Centre for Handicapped Children (Under the Institute of Child health) 11, Dr. Biren Ghosh Road Kolkata 700017 Ph. No. 2280-3615	35	For the Blind. Gets govt. maintenance grant.
15	Training College for the Teachers of the Deaf, A.P.C. Road, Kolkata 700009 Ph. No. 2350-1058	20	Govt. sponsored.
16	Jatiya Badhir Sammelon, 18, Umesh Chandra Banerjee Road, Kolkata 700006	35	Deaf Govt. Aided
17	Vocational Training Centre for the Adult Blind Women, Kolkata Blind School, Kolkata 700034	30	For the Blind Govt. sponsored
18	Bikash Bharati Welfare Society, 20/1B, Lal Bazar Street, Kolkata 700001	NA	Govt. Recognized

19	Behala Bikashayan, 1/22 Jadu Colony, Kolkata 700034	35	Mentally retarded, govt. recognized
20	Society for the Visually Handicapped 12, Dover Road, Ballygunge	NA	For the Blind Govt. recognized.
21	Care & Counseling Centre, 4B, Gopal Banerjee Lane, Kolkata 700026	81	Mentally Retarded & Hearing Handicapped, govt. aided
22	Noble Mission, 122/1/41, Manohar Pukur Road, Kolkata 700026	65	Mentally Retarded & others. Govt. Recognized
23	Anubhab, 33/5, B-1, New Alipore, Kolkata	46	Mentally Retarded, Govt. recognized
List of Special Schools for disabled children in South 24 Parganas			
24	South Sunderban Education Institute for the Deaf, P.O. Baradpur	25	For the hearing impaired, gets govt. grant.
25	Durbachati, Special School, Village – Durbacahati, P.O. Paschim Sundernagar, Block - Patharpratima	45	For the blind etc., gets govt. grant
List of Rehabilitation Council of India recognized Institutes in Kolkata			
1	National Institute for Orthopaedically Handicapped, Bonhooghly, B.T. Road, Calcutta 700090	NA	Provides manpower for providing services to orthopaedically handicapped persons, Govt. recognized
2	Ali Yavar Jung National Institute for the Hearing Handicapped, Regional Training Centre, NIOH Campus, Bonhooghly, B.T. Road, Calcutta 700090	NA	Govt. recognized
3	National Institute for the Mentally Handicapped, Regional Training Centre, NIOH Campus, Bonhooghly, B T Road, Kolkata 700090	NA	Builds capacities to empower persons with mental retardation, Govt. recognized
4	Indian Institute of Cerebral Palsy, (IICP), P-35/1, Taratolla Road, Kolkata 700088	NA	Govt. recognized
5	The Ramakrishna Mission Blind Boys' Academy, Ramakrishna Mission Ashram (T.I.T.V.H.), Narendrapur, Kolkata 700103	NA	For the visually impaired students, Govt. recognized
6	Manovikas Kendra, Rehabilitation and Research Institute for the Handicapped, 482, Madudah, Plot 1 - 24, Sec - J, Eastern Metropolitan Bypass, Kolkata 700107	NA	Various kinds of services for the physically handicapped, Govt. recognized
7	Training College for the Teachers of the Deaf, 293, Acharya Prafulla Chandra Road, Kolkata 700009	NA	Govt. recognized
8	Department of Psychology, Calcutta University, Rashbehari Shiksha Prangan, 92, Acharya Praful Chandra Road, Kolkata 700009	NA	Govt. recognized
9	Department of Applied Psychology Calcutta University, Rashbehari Shiksha Prangan, 92, Acharya Praful Chandra Road, Kolkata 700009	NA	Govt. recognized
10	Alakendu Bodh Niketan Residential, P-1/4/1, C.I.T Scheme VII-M, V.I.P. Road, Kankurgachi, Kolkata 700054	NA	Rehabilitate mentally retarded, speech impaired, spastic boys and girls, Govt. recognized
11	Speech and Hearing Institute and Research Centre , State Resource Centre (HI), 10 Mandeville Garden, Kolkata 700019	NA	Govt. recognized
12	Pradeep Centre for Autism Management, P-864, Post - Lake Town, Block – A, Dist. 24 PGS (N) Kolkata 700089	NA	Govt. recognized
13	Paschimbanga Rajya Pratibandhi Sammilani, 4, Santoshpur Avenue, Kolkata 700075	NA	Govt. recognized
14	Bikashayan, 40, Bonhooghly, Govt. Colony, Kolkata 700108	NA	Provider of rehabilitation & recovery centers, Govt. recognized
15	Netaji Subhash Open University, 1, Woodburn Park, Kolkata – West Bengal 700020	NA	Govt. recognized
16	Department of Adult, Continuing Education, Extension and Field Outreach, Rabindra Bharati University, 56 A, Barrackpore Trunk Road, Kolkata 700050	NA	Govt. recognized
17	Vocational Rehabilitation Centre for Physically Handicapped, 38, Badan Roy Lane, Beliaghata, Kolkata 700010.	NA	Govt. recognized

